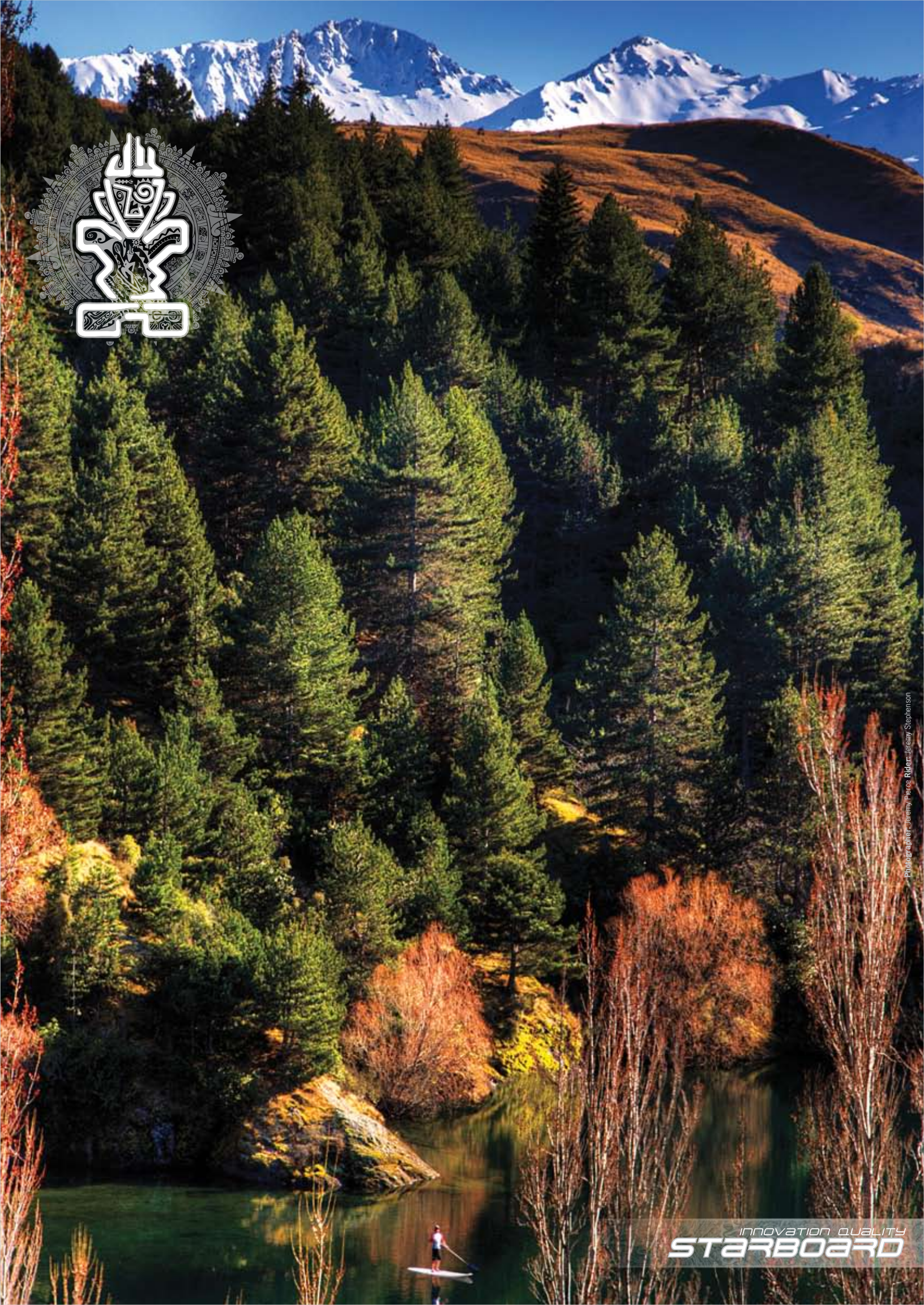


With the ultimate development program and cutting edge technology,
Starboard continues as the world leader - setting new standards
for every possible riding style.

www.star-board-sup.com



INNOVATION QUALITY
STARBOARD

Photographer: Jeremy Paces Rider: Jeremy Stephenson

Standing up experiencing the balance of nature, while enjoying pushing the ultimate development program at the cutting edge of technology:

We are exploring uncharted territories by introducing the worlds widest most stable shapes. Our unique wave program introduces the shortest outlines and best turning shapes, built in the lightest technologies, whereas the race development team has produced the quickest and most slender hulls our young sport has ever seen.

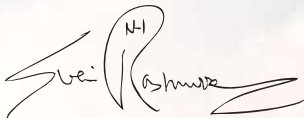
This is what we at Starboard strive for, working with our huge development crew, putting new ideas into life and refining them until revolutionary shapes are ready to meet your expectations on the water.

In the end of the year one looks back and wonders, how could so many ideas be materialized in such a short time? The answer is quite simple , we literally shape our ideas instead of spending time talking about them.

If you would ask us for our favorite board, we may say the K14 for Taco Lake where we paddle to work and the 7'4" POD for our main testing grounds on Bali, then any length inbetween according to the conditions and what sort of fish we might be out to catch.
An especially hot tip this season is however the 9'0 x 33" Hero , in the stunning Wood TAC technology with Startouch Starboard's trademark non abrasive innovative traction.

SUP at Sunrise and sunset , magic moments from a new perspective every day.

Enjoy.



Svein Rasmussen



Content

Intro by Svein Rasmussen	2-3
Team	4-5
Product development team	6-7
SUP Models	8-9
Guide	10-11
Technology	12-13
Future of SUP	14-15
12'6"x30" Cruiser	16-17
12'0"x32" Big Easy	18-19
11'2"x36" Avanti	20-21
11'2"x30" Blend	22-23
10'5"x30" Drive	24-25
10'3"x29" Pro	26-27
10'0"x34" Whopper	28-29
10'0"x34" Whopper Club/Whopper WS	30-31
9'8"x30" Element, 9'8"x29" Pro	32-33
9'0"x33" Hero	34-35
9'0"x30" Converse, 9'1"x29" Pro	36-37
Dan Gavere	38-39
8'5"x30" Pocket rocket, 8'5"x29" Pro	40-41
Venice	42-43
8'0"x26" Tiki	44-45
7'11"x29.5" Seven Eleven	46-47
7'4"x29.5" POD	48-49
Brian Szymanski The New	50-51
Surf Race	52-53
Free Race	54-55
K15, K14	56-57
Rescue	58-59
TAC	60-61
SUPer	62-63
Paddles	64-65
Assesories	66-67
Network	68-69
Thank You	70-71

EVERYTHING
YOU CAN IMAGINE IS REAL.
PABLO PICASSO

THE DREAM TEAM



Scott Mckercher
Wave program development, World wave sailing Champion, lover of chocolate.



Anne Marie Reichman
SUP and Yoga Icon/event organizer, absolute waterwoman



E.J. & Brian



Sean Poynter
Pipeline charger and SUP ripper.



Boujmaa Guilloul
Fearless Moroccan wild kid turned Stand up charger.



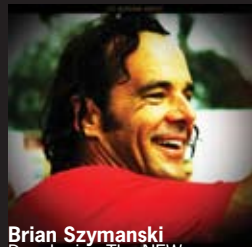
Terje Haakonsen
THE Snowboarder!



Nikki Gregg
1st place in womens Battle of Paddle. Killer white water rafter and boot camp trainer.



John Hibbard
UK Champion and event organizer. Talented racer and surfer.



Brian Szymanski
Developing The NEW.



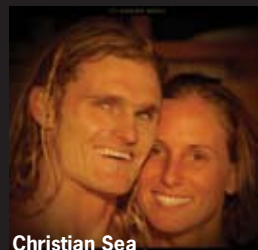
Friendly Soul
Lima's best hang-out place. Providing an awesome smile and cold drinks right on the beach



Alex Morales
Standing up from Cuba to freedom in Florida.



Jeremy Stephen
Putting SUP on the map in New Zealand.



Christian Sea
Indonesias hidden treasure



Scott Currie
SUPER stoked and spreading it all over North America.



Stuart Robinson
Fast racer and lover of life.

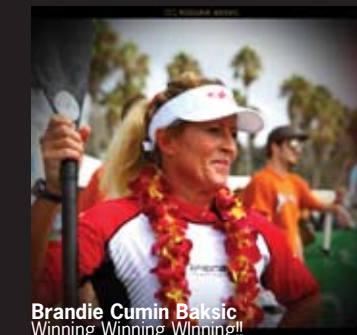


Kevin Pritchard
Wavesailing World Champion, looking for good times and a game of cards.

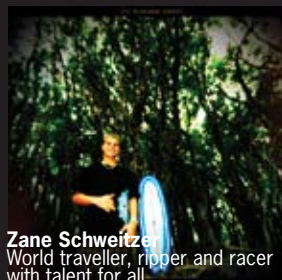


Peter Cox
Bali R&D for short board evolution. For any Bali info: Peter@Surftravelonline.com

MARK STEFANIN



Brandie Cumin Baksic
Winning Winning Winning!!



Zane Schweitzer
World traveller, ripper and racer with talent for all..



Nico
Freestyle talent. Loves his french wine and good friends.



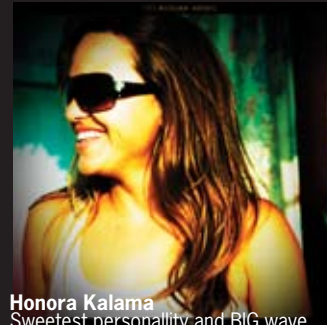
Dave Muir
Western Australia's hidden treasure. He rips Uluwatu and Teahupoo.



Brandi with family



Bjorn Dunkerbeck
36 x World Champion windsurfer, cross training with SUP.



Honora Kalama
Sweetest personality and BIG wave charger. Shreds her local Molokai breaks



Peruvian
Ancient cruiser



Philip Koster
15 year old phenomenon.



E.J. Ernest Johnson
California Racing dominator



R&D TEAM
Scott, Svein & Gaute....



JC & Margareta
Super charged Photography!



Dan Gavere
THE no 1 white water paddler. With or without fins he'll tang down wild waterfalls on his SUP



Alexander Caizergues
50.57 knots
The worlds fastest wind powered person alive. Kite boarder and world speed record holder.



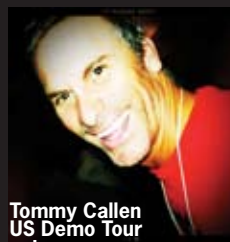
Sarah-Quita Offeringa
Multiple freestyle World Champion.



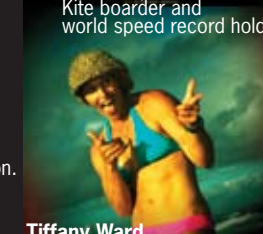
Teiva Joyeux
Tahitian tow surfer, windsurfer and SUP charger.



Nina Heiberg Joyeux
Norwegian/Tahitian kite boarder/windsurfer. SUPER talented musician.



Tommy Callen
US Demo Tour extravaganza



Tiffany Ward
Most Professional at everything. meet her on Maui on a big day.

Connor Baxter



Youngest paddler ever to go solo Molokai-Oahu. Rips in waves and fast in race.



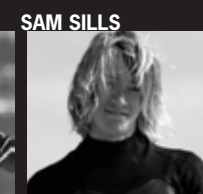
MATT A KWANTES



MOTOKO



PAUL SIMMONS



SAM SILLS



TOMO



DIANE MANES



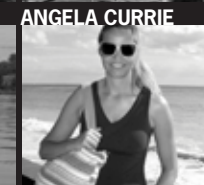
GEORGE SOURZIS



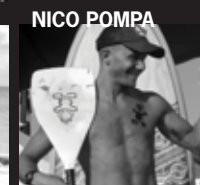
TREY CURRIE



WARREN CURRIE



ANGELA CURRIE



NICO POMPA



TATJANA SKULZ



MICHAEL SIMPER



MARCO GRIBI



MARIE PRUESSMANN



BAMBOU GASIGLIA



JEFF MADDOX



ANGELA CURRIE



PATRICK GASIGLIA



ERIC BERGHLIN



GRISHKA ROBERTS



WARREN CURRIE



GRIFFIN CURRIE



TREY CURRIE

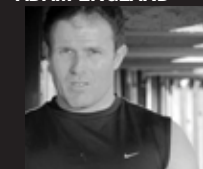
PATRIK HRDINA



JEAN-CLAUDE DESANTI



ADAM ENGLAND



AHOJ PATRIKU



ALESSANDRO M



AL MENNIE



BEPPE CUSICANNA



CHRIS MURRAY



DARREN MADDICK



MIKE GALVIN



MATT HOLDER



JAY MANNING



ANIKA WINTER



MARIE BUCHANAN



ANTI KUNNAS



SVEN AKERBOOM



ANTHONY COOPER



LUCIA MARRA



NEMO BERGNEHR

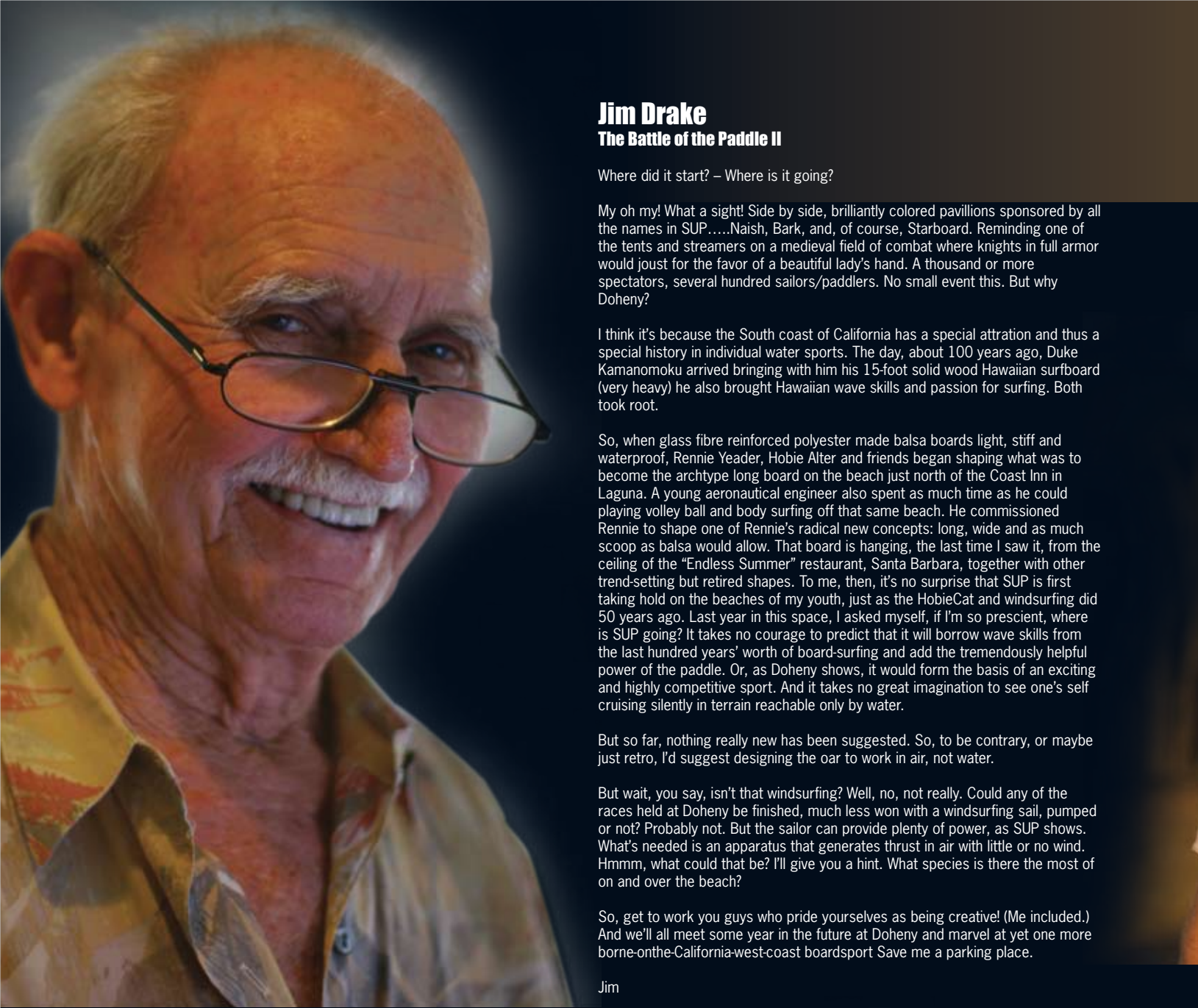


GEORGE GESNER



OWEN PALLIER





Jim Drake
The Battle of the Paddle II

Where did it start? – Where is it going?

My oh my! What a sight! Side by side, brilliantly colored pavillions sponsored by all the names in SUP.....Naish, Bark, and, of course, Starboard. Reminding one of the tents and streamers on a medieval field of combat where knights in full armor would joust for the favor of a beautiful lady's hand. A thousand or more spectators, several hundred sailors/paddlers. No small event this. But why Doheny?

I think it's because the South coast of California has a special attration and thus a special history in individual water sports. The day, about 100 years ago, Duke Kamanomoku arrived bringing with him his 15-foot solid wood Hawaiian surfboard (very heavy) he also brought Hawaiian wave skills and passion for surfing. Both took root.

So, when glass fibre reinforced polyester made balsa boards light, stiff and waterproof, Rennie Yeader, Hobie Alter and friends began shaping what was to become the archtype long board on the beach just north of the Coast Inn in Laguna. A young aeronautical engineer also spent as much time as he could playing volley ball and body surfing off that same beach. He commissioned Rennie to shape one of Rennie's radical new concepts: long, wide and as much scoop as balsa would allow. That board is hanging, the last time I saw it, from the ceiling of the "Endless Summer" restaurant, Santa Barbara, together with other trend-setting but retired shapes. To me, then, it's no surprise that SUP is first taking hold on the beaches of my youth, just as the HobieCat and windsurfing did 50 years ago. Last year in this space, I asked myself, if I'm so prescient, where is SUP going? It takes no courage to predict that it will borrow wave skills from the last hundred years' worth of board-surfing and add the tremendously helpful power of the paddle. Or, as Doheny shows, it would form the basis of an exciting and highly competitive sport. And it takes no great imagination to see one's self cruising silently in terrain reachable only by water.

But so far, nothing really new has been suggested. So, to be contrary, or maybe just retro, I'd suggest designing the oar to work in air, not water.

But wait, you say, isn't that windsurfing? Well, no, not really. Could any of the races held at Doheny be finished, much less won with a windsurfing sail, pumped or not? Probably not. But the sailor can provide plenty of power, as SUP shows. What's needed is an apparatus that generates thrust in air with little or no wind. Hmmm, what could that be? I'll give you a hint. What species is there the most of on and over the beach?

So, get to work you guys who pride yourselves as being creative! (Me included.) And we'll all meet some year in the future at Doheny and marvel at yet one more borne-on-the-California-west-coast boardsport Save me a parking place.

Jim

Gaute Kristiansen

After getting my big first kick out of Stand Up Padding in the Maldives a few years ago, I continued to learn more about product development at University in Norway.

Then I landed my job with SUP product development at Starboard and focus on how to accelerate the future of stand up padde boarding.

We are working with a skilled team of developers and riders so lots inspiration and experience is coming our way, allowing us to take big steps in most niches of the sport.

Gaute



R&D TEAM

Scott Mckercher
SUP Development

To be involved with SUP fairly early in it's inception has been a blessing. Not only to get the opportunity to grow and learn within a sport that is progressing so rapidly, but also to be working within a company that prides itself on being at the forefront of design, thus investing a lot of energy and resourses into research and development.

For myself, this has meant I've gotten to play with a lot of prototypes in a variety of different waves, all over the globe. In a little over one year I basically filled my passport with stamps from Peru, Sumba, Bali, West Java, Sumbawa, Maldives, Japan, Cabo Verde, Samoa, and last but not least my beloved Margaret River in Western Australia where I live. (Albeit a small part of the year) Thus drawing on a large range of conditions to try and provide the best boards, for as wide a range of conditions as possible. This means that at one end of the spectrum the aim has been to make SUP as accessible as possible, with extreme width and stability with rockers to allow learning in waves a pleasure and not a harrowing experience, to the other, where an experienced rider will be amazed.

The lengths and widths gradually decrease as the riders level increases, to the point where two widths come in each size with pro editions, for those that want uncompromised performance. But no matter what size board, they all have to maintain the basic element of the fact that they surf not just well, but unreal.

For the most fun to be had on a board is when it's fast, loose and easy to turn, and has drive when you put it on rail. And these are inherent qualities built into each board, along with the fact that they're easy to use, so energy isn't wasted just trying to stay on your board, but maximizing your time on the water. Meaning more waves, equaling more fun.

And it has been a lot of fun getting the boards to the point that they're at now, with small tweaks to entry and tail rockers, V, outline and fin set ups in between each and every session, searching for faster, tighter turning, more maneuverable boards.

And in that time I've interacted with a cool group of people involved with Starboard. Such as Peter Cox who lives in Bali providing invaluable support on the ground and knowledge as to how the boards should be evolving, my mates from home Mike Galvin and Dave Muir, who have become possessed by the sport. And it's also the case with the whole team when we've been together on trips. Zane, Connor, Anne-Marie, John Hibbard and Honora. A wealth of information to draw from all their experience from every corner of the globe.

And in between all these trips, the tireless efforts of Mr Nimit and his team to produce boards in a time frame which is not possible, but then becomes so.

To see how quickly things have been moving has been phenomenal, but in retrospect, not entirely out of the ordinary, as it has it's roots in quite a few sports to draw knowledge and information from.

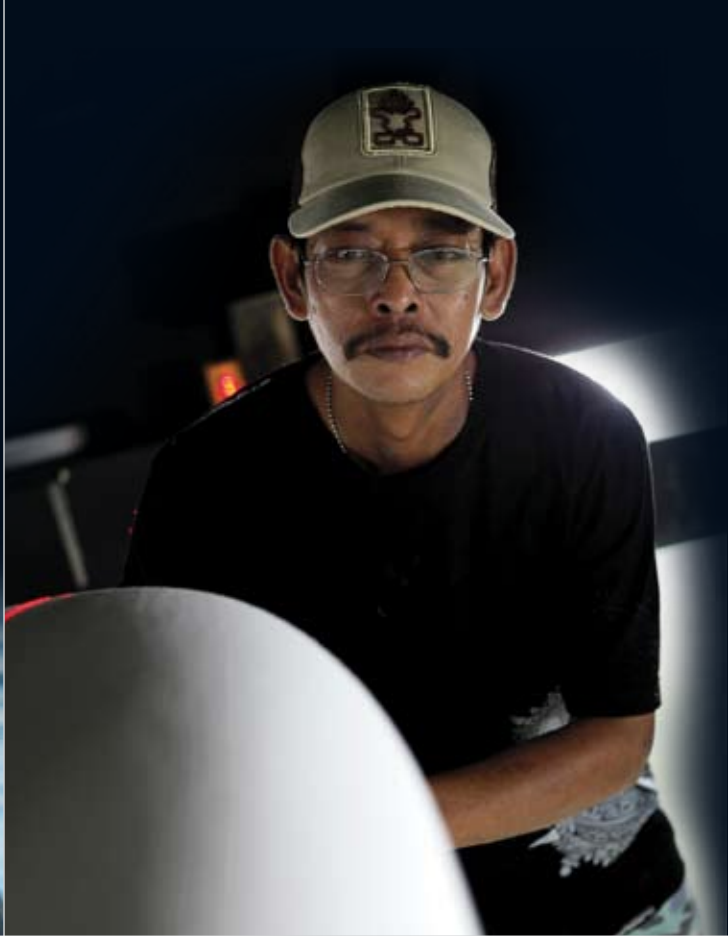
But the driving force behind the cyclonic evolution of SUP at Starboard is undoubtedly Svein Rasmussen. Always moving, always thinking, always pushing people to go beyond their knowledge and limits.

It's been a rollercoaster of a ride, where we've produced a damn fine range of boards to cater for EVERYONE'S needs. From the ocean to the rivers and lakes, the flat water aspect is one that's really taken me by surprise. The enjoyment of riding a K15 in sheet glassy water is one of the most surreal new experiences I'm enjoying at the moment, encompassing a kaleidoscope of scenic backdrops in the process.

Where I've been really lucky is to be able to produce toys for myself. To try and make boards as loose, fast and maneuverable, in a size range which was thought impossible perhaps only a year ago. Vertical attacking lines with full roundhouse cutbacks reminiscent of short board gouges are now possible, and it still feels like it's only the beginning.

Nimit Pormjan Mr. SUP.

There is one person in particular that has made it possible for us to build the prototypes fast and precise enough to quickly decide which of our ideas that may meet the market. Nimit Pormjan has dedicated all his time over the last years to enhance the speed of the development program. He has been instrumental in refining the CAD prototypes and building boards from the foam up. He also supervises his strong workshop crew to build with high accuracy.



CHOOSE YOUR BOARD

- 1. The longer a board is, the better it glides due to its increased water length.
- 2. The wider a board is, the more balance it will provide.
- 3. The shorter a board is, the better it will be at changing direction, and react on foot pressure.

CHOOSE YOUR TECHNOLOGY AND ART

Most boards are made available in all technologies to fit your specific requirements.

Technora Sandwich : Super light weight PVC/Glass/Epoxy/EPS Sandwich for increased rigidity and low swing weight. Startouch.

TAC edition : Collectors item, light full wood/epoxy/glass sandwich technology with art design from snowboard guru Terje Haakonsen. Startouch. Limited supply!

Touch Blue : Startouch deck grip, light, durable and impact resistant, built with epoxy/EPS glass technology and a 3/4 wood veneer deck reinforcement.

Tufskin Camo/Candy : Impact resistant, durable epoxy/EPS glass technology. 3/4 wood veneer deck reinforcement and full EVA deck traction in 2 cool color choices, Black and Candy.

FEATURES

All Starboards have PVC reinforcements around all inserts
All Starboards are laminated with strong light epoxy resin.
All Starboards are using fusion blown EPS.
All Starboards have integrated carry handles for easy transport (except race boards)
All EVA deck boards have diamond traction in the standing area.
All Tufskin Camo boards have deck track for windsurfing ,except 8'5" x 30".
All Tufskin Camo boards under 10'0" have footstrap inserts for windsurfing, except 8'5" x 30".
TT box for windsurfing: Whopper Club edition and K 15.
Retractable daggerboard: SUPer 12'6", and SUPer 12'0".

WARNING:
Boards larger than 10'5" are not constructed for big surf.
Several of the models are functional for windsurfing and wave riding, but none of them are designed or built for jumping or planing.



7'4"x29.5"	7'11"x29.5"	8'0"x26"	8'5"x29"	9'1"x29"	9'8"x29"	10'3"x29"
The Pod Camo, Candy, Blue touch	Seven Eleven Technora, TAC, Camo, Candy, Blue touch	Tiki Camo, Candy, Blue touch	Pro Technora, TAC, Camo, Candy, Blue touch	Pro Technora, TAC, Camo, Candy, Blue touch	Pro Technora, TAC, Camo, Candy, Blue touch	Gun Pro Technora, TAC, Camo, Candy, Blue touch
Thickness: 4.21" Volume: 112 L Tail Width: 18"	Thickness: 4.1" Volume: 116 L Tail Width: 18"	Thickness: 4.0" Volume: 105 L Tail Width: 17.7"	Thickness: 4.0" Volume: 139 L Tail Width: 17"	Thickness: 4.2" Volume: 127 L Tail Width: 18.1"	Thickness: 4.0" Volume: 139 L Tail Width: 18.3"	Thickness: 4.3" Volume: 144 L Tail Width: 16.5"

PRO WAVE



8'5"x30"	9'0"x30"	9'0"x33"	9'8"x30"	10'0"x34"	10'5"x30"	11'2"x36"
Pocket Rocket Technora, TAC, Camo, Candy, Blue touch	Converse Technora, TAC, Camo, Candy, Blue touch	Hero Technora, TAC, Camo, Candy, Blue touch	Element Technora, TAC, Camo, Candy, Blue touch	Whopper Technora, TAC, Camo, Candy, Blue touch	Drive Technora, TAC, Camo, Candy, Blue touch	Avanti Technora, TAC, Camo, Candy, Blue touch
Thickness: 4.3" Volume: 126 L Tail Width: 19"	Thickness: 4.0" Volume: 136 L Tail Width: 19.2"	Thickness: 4.1" Volume: 146 L Tail Width: 18.8"	Thickness: 4.3" Volume: 150 L Tail Width: 17.2"	Thickness: 4.1" Volume: 168 L Tail Width: 18.4"	Thickness: 4.0" Volume: 156 L Tail Width: 16.5"	Thickness: 4.8" Volume: 206 L Tail Width: 16"

WAVE



10'0"x34"	11'2"x30"	12'0"x32"	12'6"x30"
Whopper Club/WS Camo	Blend Technora, TAC, Camo, Candy, Blue touch	Big Easy Technora, TAC, Camo, Candy, Blue touch	Cruiser Technora, TAC, Camo, Candy,
Thickness: 4.1" Volume: 168 L Tail Width: 18.4"	Thickness: 3.0" Volume: 168 L Tail Width: 16.1"	Thickness: 4.6" Volume: 205 L Tail Width: 16.7"	Thickness: 4.8" Volume: 206 L Tail Width: 18"

ALL ROUND



12'6"x29" 12'6"x31"	12'6"x26.5"	12'6"x25" 12'6"x23.5"	14'0"x24"	15'0"x30"
Free Race Red Stripe Brushed Carbon Blue Stripe Epoxy/glass	Surf Race Red Stripe Brushed Carbon Blue Stripe Epoxy/glass	The New Red Stripe Brushed Carbon Blue Stripe epoxy/glass	K14 Red Stripe Brushed Carbon Blue Stripe Epoxy/glass	K15 Red Stripe Brushed Carbon Blue Stripe Epoxy/glass
Thickness: 12'6"x29" - 7.7" 12'6"x31" - 7"	Thickness: 13.8"	Thickness: 12'6"x25" - 8.9" 12'6"x23.5" - 7.8"	Thickness: 7.3"	Thickness: 7.3"

RACE

GUIDE

Pro wave

Wave

All round

Race

Pro Wave

Wave

Allround/Cruising

Race

Stabillity Rating

7'4" x 29.5" POD

7'11" x 29.5" Seven Eleven

8'0" x 26" Tiki

8'5" x 29" Pro

9'1" x 29" Pro

9'8" x 29" Pro

10'3" x 29" Pro

8'5" x 30" Pocket Rocket

9'0" x 30" Converse

9'0" x 33" Hero

9'8" x 30" Element

10'0" x 34" Whopper

10'5" x 30" Drive

11'2" x 36" Avanti

10'0" x 34" Whopper Club

11'2" x 30" Blend

12'0" x 32" Big Easy

12'6" x 30" Cruiser

12"6" x 29" Free Race

12"6" x 31" Free Race

12"6" x 26.5" Surf Race

12"6" x 23.5" The New

12"6" x 25" The New

K14 x 24"

K15 x 30"

1.5

2

1

4

5

5

6.5

4.5

5

8

6

9

8

10

9

8

9.5

9

8

9.5

7

3

5

3

8



CHOOSE YOUR TECHNOLOGY

To meet your specific requirements and expectations we have developed and refined a range of board technologies, with most shapes available in all technologies.

TECHNORA Sandwich

Starboard's Technora Technology is a custom Epoxy sandwich construction built around a lightweight fusion blown 14kg/L EPS internal core fully wrapped with glass under a pre shaped cross-linked 3mm high density PVC foam. The outer glass fiber skin has additional reinforcements in the standing area complimenting the full high density foam deck structure. Technora offers the highest shape accuracy and is our lightest premium technology. All Technora boards Startouch, Starboard's trademark deck traction.

- Advantages:
- Super light weight
 - Extra rigidity
 - Premium finish
 - Extra strength

WOOD Sandwich TAC

An original Wood technology pioneered by Starboard in 1994. The lightweight fusion blown EPS has PVC reinforcements inbedded for all insert's reinforcements. Military grade fiberglass wraps around the core in an Epoxy resin matrix to form an inner sandwich wall under the combination of a strong and stiff 510kg/m3 0.6mm Australian Pine and Makori veneer. TAC boards have Starboard Startouch deck traction.

- Advantages:
- Light
 - Stiff
 - Strong
 - Exceptional look

TUFSKIN EVA CAMO/CANDY DURABLE, STRONG AND TOUGH

Tufskin technology uses a layer of continuous mat fibres sandwiched between 2 layers of glass weave to form a thick, stiff and durable epoxy sandwiched laminate. The standing area has a 0.6 mm Australian pine veneer layer for extra strenght.

With superior impact resistance, it is the technology of choice for those looking for durability and strength.

The seamless rail finish and sharp release edges add to the value, quality and performance of Tufskin Technology.

Boards may be fitted with an air valve. Always close the valve before use.

TUFSKIN TOUCH EXTRA TRACTION, DURABLE, STRONG AND TOUGH

Tufskin technology uses a layer of continuous mat fibres sandwiched between 2 layers of glass weave to form a thick, stiff and durable epoxy sandwiched laminate. The standing area has a 0.6 mm Austtarlian pine veneer layer for extra strenght.

With superior impact resistance, it is the technology of choice for those looking for durability and strength.

The seamless rail finish and sharp release edges add to the value, quality and performance of Tufskin Technology.

Startouch non abrasive deck traction ends the need for surf wax and introduces a new era of surfing functionality and simplicity.

TECHNOLOGY, past and future

Starboard has set the pace in board technology for over a decade. Last season winnings includes the first World Cup of SUP in Hamburg Germany, the Ohau to Molokai race, the British series, the Australian events and several class victories in the Battle of The Paddle. Starboard is holding the speed record for wind powered sail crafts at 49.09 knots and has been winning the Professional Windsurfer Association's manufacturers ranking 4 years in a row. Starboard introduced precision molded wood veneer "Green" boards back in 1995 and brought the first EVA deck grip surf and windsurf boards to the market the same year.

Starboard is taking the lead in the whole wide and short board revolution in Stand Up Paddleboarding and already last year brought the stand on top Kayak concept to the market with integration of kayaking and Windsurfing. We are proud to work with Jim Drake who not only designed the currently fastest manned plane, the X15, 40 years ago, the Starboard K15 last year, but also co-invented windsurfing back in 1967. Thanks also to our watermen/designers Scott McKercher, Svein Rasmussen, Brian Szymanski and Peter Cox. Despite a strong history, Starboard acknowledges that really only the future counts and puts more resources into development than ever before.

PRECISION, each millimeter counts.

With 15 years of experience in cutting edge windsurf development, Starboard sets the very highest precision standard. Critical segments like rockerlines, rails, V shapes, concaves and board thickness are carefully monitored and checked throughout the production process.

STARTOUCH

Last year Starboard introduced the non abrasive deck traction Startouch. This new traction texture ended the need for surf wax and is now used in Technora, the TAC wood line and in Blue Touch, introducing a new era in surfing functionality and simplicity.

RAW MATERIAL INFO

Epoxy or polyepoxide is a thermosetting epoxide polymer that cures (polymerizes and crosslinks when mixed with a catalyzing agent or hardener). Most common epoxy resins are produced from a reaction between epichlorohydrin and bisphenol-A. Starboard uses Epoxy as resin for material bonding in all boards.

PVC is the first foam material specifically formulated for a marine environment and is a poly vinyl chloride (PVC), isocyanate blend. Starboard uses the high strength PVC foam in Technora sandwich boards and around all insert areas in all boards.

PINE WOOD Starboard uses 0.6 mm 510 kg /m3 Australian Pine veneer. This very consistant uni directional natural resin rich wood grain has a quality of light weight, low epoxy uptake and good impact resistance.

EPS or Expandable Polystyrene contains 95% air and 5% polystyrene. The blowing agent used for EPS Foam is Pentane gas which does not contain any chlorine atoms as CFC's. The EPS production processes begins in the pre-expansion process where the EPS beads expands 50 times in volume by the heat of steam, forming according to the shape of the EPS mold. Starboard uses fused EPS as foam core in all SUP boards

Surfinz boxes are compatible with FCS and provide 8 mm of adjustment range: perfect for tuning the drive of your SUP board to match your style and taste.

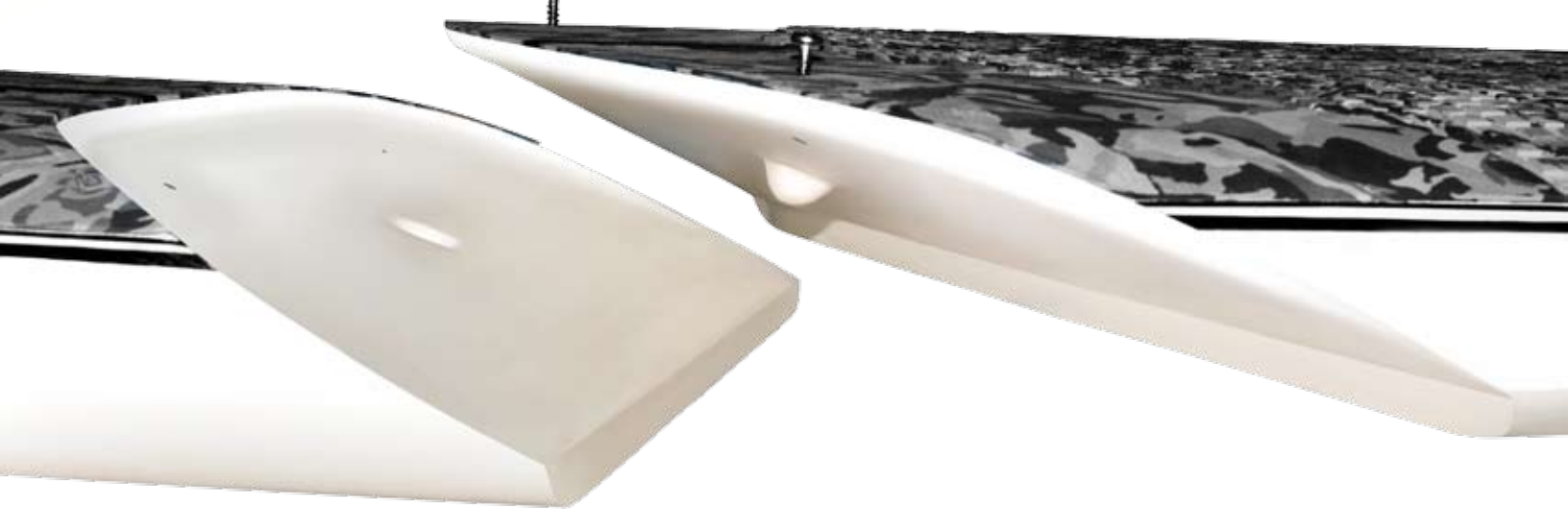


Flex oriented moulded fins for smoother carving included with all boards with side fin inserts.

Stiffer hexel fins for charging bigger surf included with all pro boards.

The Transporter

Starboard has in collaboration with Mark Raaphorst developed an easy to assemble, robust 2 piece technology. The built in stringers in the attachment areas are taking the stress load. The fool proof 4 screws system takes about a minute to put in place. The system will only add on 1.7 kg of weight, but adds a world of simplification for transport and storage. Available in 11'2" x 30" Blend shape . Fly well!





Sean Poynter

When first introduced to SUP, I was curious. Coming from a professional surfing background, the whole idea of SUP'ing came across a little boring. For all I knew, it was a sport where old guys would stand on top of oversized boards and paddle around with an oar to easily catch waves. As a young surfer, it just didn't sound appealing.

Then I came to experience it first hand... It was an activity that tested my abilities as a surfer- my balance, strength, and natural sync with the movement of the ocean.

After a while I found how it puts a new twist on the methods of traditional surfing. Instead of testing your abilities only while being on the wave, SUP challenge you during the entire session- when you're standing on the board, paddling, catching and surfing a wave. It is a great tool to fine-tune your surfing style. SUP'ing is an activity that I have taken a great liking to and look forward to each session as an opportunity to further improve my skills.

6'6" x 29 3/4" The Impossible

Impossible engineering
Introducing the very most radical SUP shape to date, Starboard revolutionizes paddleboarding and brings the sport to the front of the line up.

The 6'6" is hot property and this catalogue went to print before the artwork and specs were all measured up. For full info, check out:
www.star-board.sup.com

Tahiti

The beginning of a World Tour

The Waterman League is proud to announce Hinano's 'Stand Up World Tour Contenders' presented by Moorings and Starboard. This unique exhibition event took place at the legendary spot of Teahupo'o in Tahiti, September 2009.

The event highlighted the leading surfers in our industry. Pitted against each other in some of the most challenging conditions in the world, the Teams battled it out for the pride of their region and to take the sport to a whole new level.

After two weeks aboard two luxury boats in the company of twelve of the world's greatest Stand Up Paddlers, all eyes were once again focused on Teahupo'o as it turned on to provide the most epic conditions the competitors had waited for....
COMPETITION RESULTS TO BE DECIDED INTERACTIVELY, BY THE AUDIENCE

An online judgement will be posted at www.watermanleague.com to encourage you to stop by, watch and post your score.

Starboard is proud to be represented by Dave Muir, one of the most talented big wave chargers out there!

Team Tahiti

Vetea 'Poto' David
Arsene Harehoe
Didier Tin Hing
Patrice Chancy
Guillaume Bourlignaux

Team Hawaii

Ekolu Kalma
Kainoa McGee
Keali'i Mamala
Duane DeSoto

Team International

Chuck Patterson (US)
Jamie Mitchell (AUS)
Dave Muir (AUS)
Antoine Delpero (FR)





New zealand

The indigenous Maori named New Zealand Aotearoa, commonly translated as, "The Land of the Long White Cloud". It's an island country in the south-western Pacific Ocean. The north islands green landscape is a perfect home for many sheep and the south islands giant cliffs rise thousands of meters vertically from the sea. (spectacular battlegrounds for hobbits and orcs). It is a country full of contrasts; glaciers surrounded by rain forests, hot beaches and cold ski fields. The radical nature has become a Mecca for extreme sport activists, forming a perfect platform for SUP. Such a wide variety of conditions can cater to every level of SUP rider. From a glassy lake cruise with majestic mountains as a backdrop, to charging down a raging river rapid, or a southern ocean swell.

12'6" x 30" Cruiser

Renowned as a fast cruiser for both open ocean and lakes, the 12'6" maintains it's performance proven shape. It's exceptional glide comes from the length. The smooth rocker line and generous nose lift makes it a nice choice for "down winders". The 12'6" with its thin rails, tail lift and high nose makes the ideal board for catching your first waves and it will surprise you with its good carving ability. Being probably the best tandem surf board ever, the 12'6" is a classic all rounder.

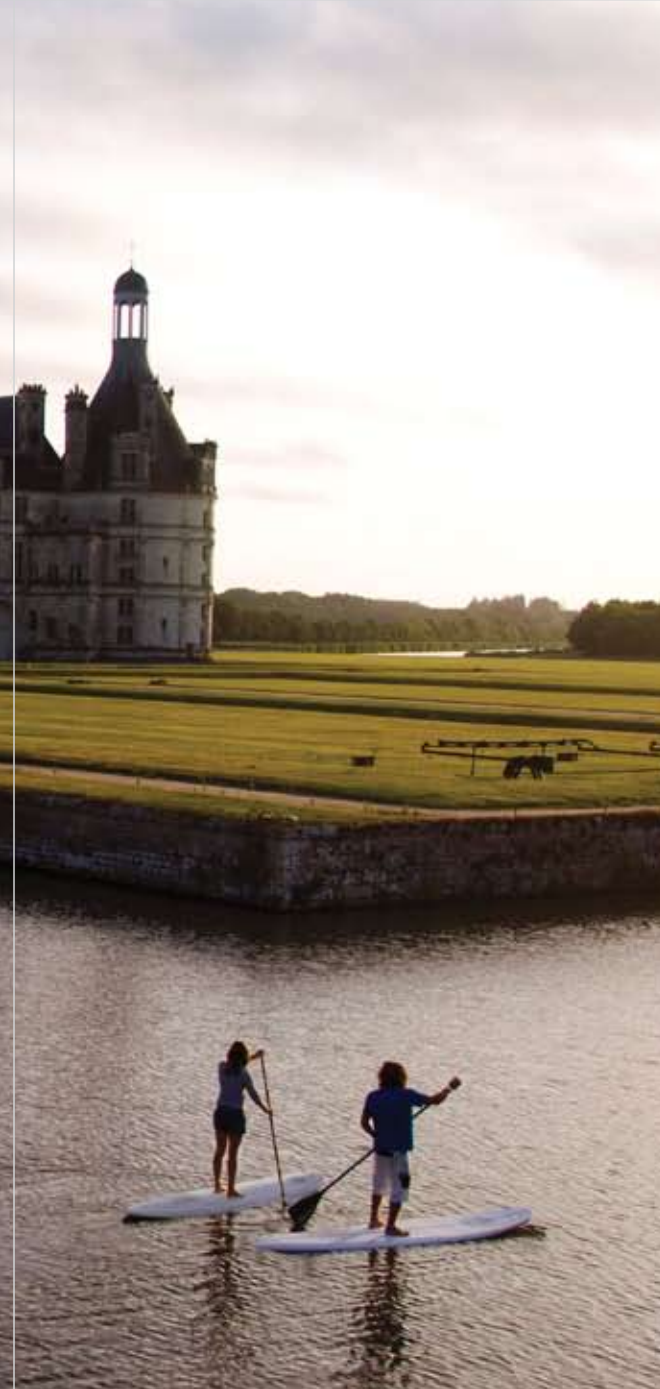
Mono concave nose section with V running all along the back 3/4.

Dimensions:
Length: 380cm
Width: 77cm
Tail Width:15.9" /40cm
Thickness: 4.8" /12.3cm
Volume: 206 L

Available in: Technora, TAC, Candy and Camo



Thruster fin system
23 cm fin / 9.1" Center fin
11.5cm / 4.5" Side fin



Thruster fin system
23 cm / 9.1" Center fin
11.5 cm / 4.5" Side Fins

12'0" x 32" Big Easy

Big and Easy, it's as simple as that. Stable to paddle thanks to its 32" width and great glide with the full 12'0" length. The generous nose width and mono concave up front provides fun nose riding abilities and also lets the board paddle into waves with ease. The pinned out alt section with ample tail rocker sports good wave riding characteristics for a board of this size.

Slight mono concave nose section to flat middle with a fair amount of V in the back.

Dimensions:

Length: 370cm
Width: 81.8cm
Tail Width: 42.6cm /16.7"
Thickness: 11.8cm / 4.6"
Volume: 205 L

Available in Technora, TAC, Candy, Camo, Blue Touch

France

The first time I discovered SUP was with Margareta and Franck Debaecker in Paris . Using the paddleboard on flatwater was a gréat way to get a new vision of Paris and Loire's castels. We probably were the first ones, it was just fantastic, everybody looked at us like aliens, a remarkable experience.

For me Paddleboarding is a great activity on windless days. I feel completly addicted to it now. In France we can ride so many places especially around Leucate. We often get small waves, it is super to ride with friends and share good times. I like this spirit.

Nicolas Akgaziyen



Thruster fin system
17 cm / 6.7" Center fin
12cm / 4.7" Side fin

11'2" x 36" Avanti

Stand up paddle boarding to the people. The Avanti is a ground breaking concept building on the success of the revolutionary Whopper (10'0" x 34') and adds both glide and stability. Easy to catch waves and wide enough to bring your kids or dog. This voluptuous shape performs admirably in the waves, easy into waves, fast down the line and an agility that defies it's proportions. If you are of a larger body build with perhaps heavy bones, then this is THE board for you.

Dimensions:

Length: 343cm

Width: 91cm

Tail Width: 16" / 40.4 cm

Thickness: 4.8" / 12.3 cm

Volume: 206 L

Avante, widen up your perception of SUP.

Available in Technora, TAC, Candy, Camo, Blue Touch

"Uber Whopper"

Just came off the water having grabbed the 'Uber Whopper' and well, what can you say, it's a different sport. I loved it, you could start at the nose on take off, run down to the back, give it a good stamp to the right, trim to the front and away you go. It was surprisingly quick, and not bad on the cutback. Can't wait to take the wife daughter and dog out, all at the same time.

Mike Galvin



Thruster fin system
22 cm / 8.7" Center fin
11.5 cm / 4.5" Side fin

11'2" x 30" Blend

A very popular board with it's roots from traditional longboarding. The Blend's 11'2' long hull glides well on flat water and is especially easy to catch waves with. While surfing the thin refined rails aft and increased tail V provides a responsive feel and exciting drive out of a turn. The flattened out deck makes the board comfortable for paddling and great for nose riding. It's a very forgiving board to "walk" with its slightly wider nose. The 11'2" x 30" provides enough glide for flat water cruising, good stability for catching waves and exciting performance once up and riding, making it the perfect Blend.

Slight mono concave in the nose section to flat middle with V in the tail.

Dimensions:

Length: 343cm
Width: 77cm
Tail Width: 16.1" / 41cm
Thickness: 3.9" / 10cm
Volume: 168 L

Available in: Technora, TAC, Candy, Camo, Blue Touch

London

You'll never buy bottled water claiming to be fresh from the River Thames!! While maybe not the cleanest water way in the world there is something special about it. Tower Bridge, London Bridge and Big Ben, the list of things to see is endless and what better way to see them than from the water. Tourists lean over the railings to see what you are doing and you are the talk of the town as you paddle past. Stay out of the way of the big tourists boats and watch for strong rips around the bridges, do that and you'll have an amazing paddle. SUP is taking me on journeys I never thought possible.....

John Hibbard



Sumba

Shangri la - The Search for Shambala.

The legend of this lost valley is one of the most ancient Tibetan myths, and one of the most striking myths of a sacred landscape, a landscape that inspires stories itself. Reflecting back to a trip to the outer islands of Indonesia, it's very easy to draw comparisons with such a concept, (and we were sworn to secrecy) for even though we just experienced it, it's surreal beauty, peace, utter perfection and detachment from the rest of the planet feels almost otherworldly. We then found ourselves drinking out of a coconut in the dining area with the wave peeling down the reef merely a stone's throw away. I thought I saw a Green iguana walking up the beach, I'm not sure, as my eyes were intoxicated by everything as. We found ourselves in an exquisite and ridiculously perfect surrounding.

The Sumba Foundation

Claude Graves and Sean Downs established the Sumba Foundation in 2001.

"We now are proud to be able to say that there are 20,000 people in our West Sumba area that are benefiting from our efforts. Many of them have water at their villages now, clinics they can walk to with the very best diagnosis on the island. We are also supporting 13 schools, malnutrition projects, organic farming projects and the bio-diesel. It is an on going story that is bringing great value back to the community in Sumba"

Claude Graves

10.5" x 30" Drive

Balancing between stability, maneuverability and glide, the smooth pintail and wide nose feels small on the wave and plenty stable while paddling. The deck is flattened out for better foot grip and the thin rails provide a slightly sharper feel. It's rocker line and increased V numbers in the back foot area combine to produce a board with extreme drive and speed, yet is loose and responsive. It's fun in marginal surf and goes very well in serious waves as well. Great flat water glide and more than anything, it really feels alive on a wave.

Mono concave nose section to flat middle with tail V.

Dimensions:

Length: 319cm

Width: 77cm

Tail Width: 16.5" /40.2cm

Thickness: 4.0" /10.2cm

Volume: 156 L

Available in Technora, TAC, Candy, Camo, Blue Touch



Thruster fin system
22 cm /8.7" Center fin
11.5cm /4.5" Side Fin





Thruster fin system
21 cm /8.3" Center fin
11.5cm /4.5" Side Fin

10'3" x 29" Gun Pro

The board you will use when the surf picks up. When you need the glide to get in to the waves and the confidence to handle the drop. With a classic gun out line, thinner deck profiles, rails and rockerline to match, it's all about the containment of high speed while still being able to initiate a turn and trust the board that's under your feet. An interesting bi product of this shape is the enhanced glide well suited for light people wanting a board for calm water paddling

Long mono concave running from nose and two thirds of the board, merging to double concave with fair amount of tail V.

Dimensions:

Length: 311cm

Width: 73cm

Tail Width: 16.5" / 40.4cm

Thickness: 4.3" / 10.8cm

Volume: 144 L

Available in, Technora, TAC, Candy, Camo, Blue Touch

Gnaraloo

Western Australia is an extraordinary piece of land. It has an immense coastline with a vast array of waves that rolls in from the Southern Ocean. Winds that blow over deserts to reach the sea imposingly, winds rush in to cool the scorched land. Like everything in nature, its in perfect harmony. A simple life around the campfire at night, telling stories about the day's rides. The wave itself is the most terrifying, radical, fast and get perfect wave you can ever SUP.

Scott McKercher



The Burger

- 1 sesame-seed hamburger bun
- 1/4 pound ground beef
- 1 dash salt
- 3 dill pickle slices
- 1 teaspoon ketchup
- 3 onion rings
- 2 tomato slices
- 1/4 cup lettuce -- chopped
- 1 tablespoon mayonnaise

1. Preheat a barbecue grill on high.
2. Toast both halves of the bun, face down, in a hot skillet. Set aside.
3. Form the beef into a thin patty slightly larger than the bun.
4. Lightly salt the hamburger patty and cook on the barbecue grill for 2 to 3 minutes per side.
5. Build the burger in the following stacking order from the bottom up: bottom bun hamburger patty pickles ketchup onion rings tomatoes lettuce mayonnaise top bun

Makes 1 hamburger.

10'0" x 34" Whopper

Extremely stable at 34 inches width, the Whopper provides stability to paddle through the most turbulent white water and other difficult conditions. Maneuvering the board is simple as it turns very easily on the spot with its stability making it a breeze to paddle into waves. Almost impossible to nosedive, it catches even the smallest waves with ease, making SUP even more fun. The Whopper continues to surprise with amazingly good wave riding characteristics for it's width.

Mono concave nose section to flat middle and tail V.

Dimensions:
Length: 305cm
Width: 86.5cm
Tail Width: 18.4" /46.5cm
Thickness: 4.13" /10.5cm
Volume: 168 L

Available in Technora, TAC, Candy, Camo, Blue touch




Thruster fin system
17 cm /6.7" Center fin
12 cm /4.7" Side Fins




How To Paddle

With Nikki Gregg & Anne Marie Reichman


First of all, make sure you use plenty of sunscreen! Then, the best place to begin is calm water away from swimmers, boats and rocks.

Paddling


Anne-Marie Reichman




1. Find your balance on your board by sitting on your knees.




2. Stand up comfortably in the middle of the board where you can see the black marks. Put your toes in a straight line and your feet shoulder-width apart.




3. Your top hand is opposite to the side you are paddling on and gripping the T-Bar at the top of paddle.




4. Aim for the nose of the board, pulling the paddle through the water in one long stroke, as close to the rail as possible. Use your whole upper body to pull the paddle towards you - use your stomach muscles like a sit-up.

Turning

Nikki Gregg




1. When you first see a shark or a wave approaching, the quickest way to turn your board around is with a pivot turn,




2. First take a small step back from your paddling position, so that the tail sinks and nose comes out of the water and induces the pivot motion.




3. The board comes around faster when wide sweeping strokes are used, in a big semi circle from nose to tail.




4. Once you've finished the turn step back to the central stance position so the board levels out and you're off on your merry way.

Catching waves


1. When paddling for a wave, it becomes easier when you move your feet slightly into your preferred stance for surfing. It will be either left or right foot forward, depending on what feels more natural to you.



2. To get onto the wave you must use strong, determined strokes. Generate enough speed so that you will get on to the wave.



3. At the point you feel the wave propelling you forward and the glide sensation begins move a little further back on the board and spread your feet apart into surf stance.



4. Moving back helps to sink the tail, keeping the nose up as you come down the face of the wave. Once speed is up, lean into the turn by bending and weighting the back leg and foot whilst leaning over onto the inside rail that you wish to turn off. You are now officially up **and riding and hooked for life.**

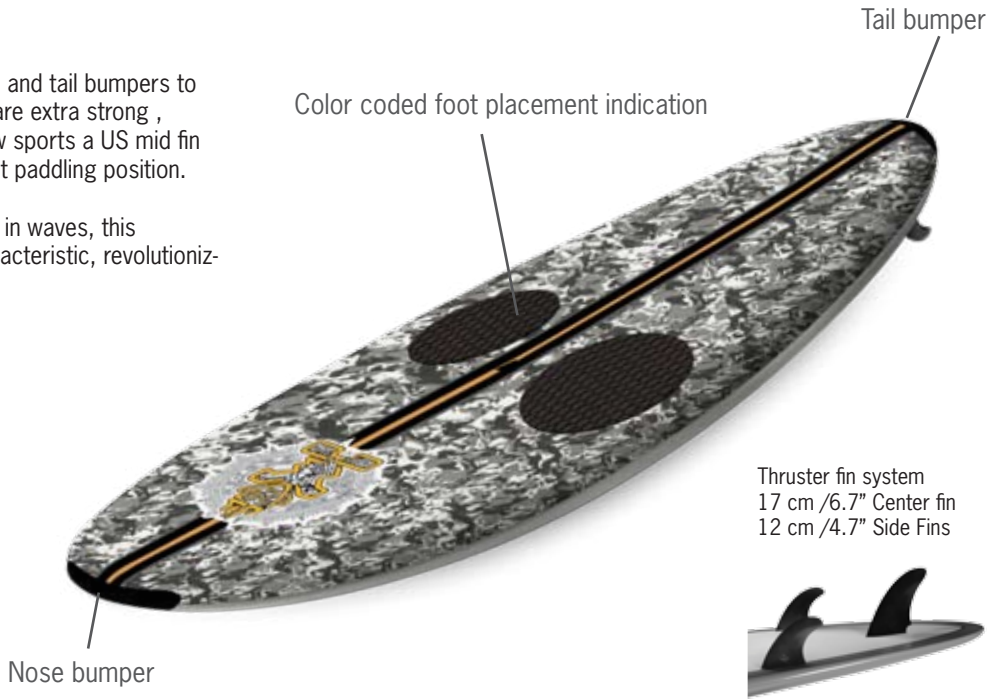
10'0" x 34" Whopper Club

The Whopper Club edition features high density EVA nose and tail bumpers to reduce the risk of injuries. The side fin Mini TT fin boxes are extra strong , especially well suited for school usage and the board now sports a US mid fin box. The standing area is color coded to indicate the best paddling position.

All together the very best board ever to learn to Sup with in waves, this combined with unique high performance wave riding characteristic, revolutionizing Stand up paddle boarding.

Mono concave nose section to flat middle and V in tail. Lots of nose kick to get an easy take off.

Dimensions:
Length: 305cm
Width: 86.5cm
Tail Width: 18.4" /46.5cm
Thickness: 4.13" /10.5cm
Volume: 168 L



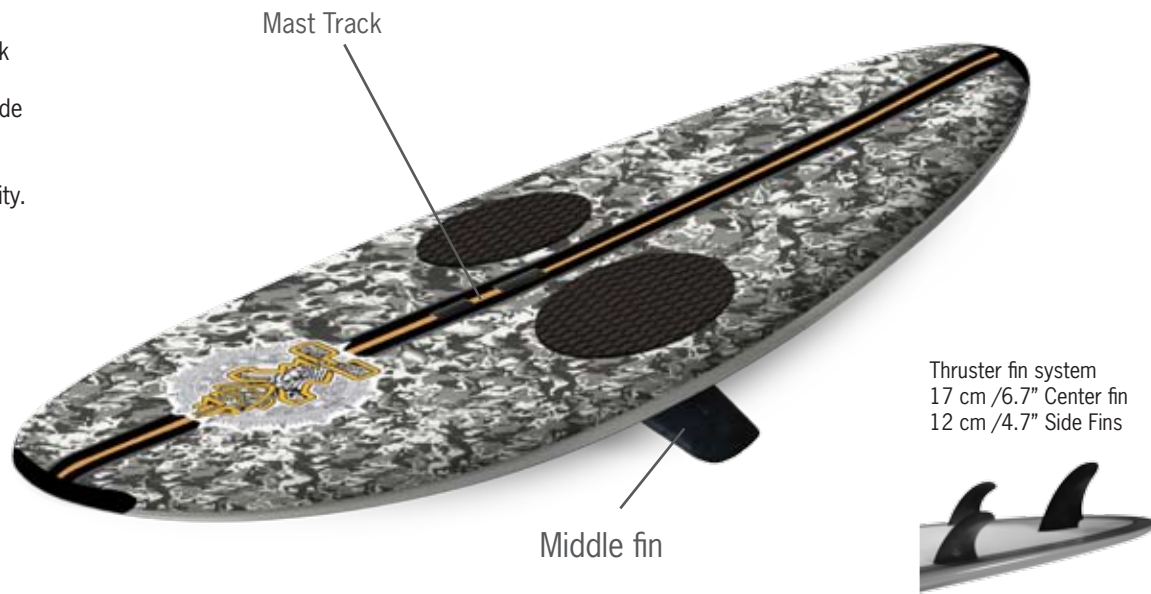
10'0" x 34" Whopper Windsurf

The Whopper Windsurf with mast track and middle fin option doubles as an entry level windsurfer with the nice glide coming from its generous length.

The 34" (85 cm) width provides stability. This shape will even surprise in wave riding with its carving.

Mono concave nose section to flat middle V in tail.

Dimensions:
Length: 305cm
Width: 86.5cm
Tail Width: 18.4" /46.5cm
Thickness: 4.13" /10.5cm
Volume: 168 L





9'8" x 30" Element

A great higher end all-round board. Providing good glide into waves but still able to be thrown on rail at high speed into a driven turn. A progressive rocker with constant V throughout and accelerated tail kick makes for a smooth ripper of a board. The shape suits most riding styles and body weights in most conditions. The 9'8" is with its wider nose great for nose riding and at the same time has enough paddle speed for pleasure cruising in calm waters.

Mono concave nose section to flat middle with tail V.

Dimensions:
Length: 294cm
Width: 77cm
Tail Width: 17.2" /43.6cm
Thickness: 4.3" /11cm
Volume: 150 L

Available in Technora, TAC, Candy, Camo, Blue Touch



Thruster fin system
21 cm /8.3" Center fin
11.5cm /4.5" Side fin



9'8" x 29" PRO

Uncompensated performance for confident paddlers taking advantage of the narrower width. The outline and rocker produces and maintains speed through a turn, while allowing the option for projecting vertically. A length which is optimal for glide into waves and nose riding, while still maintaining a radical edge.

Mono concave nose section to flat middle tail V.

Dimensions:
Length: 294cm
Width: 74cm
Tail Width: 18.3" /46.4cm
Thickness: 4.0" /10cm
Volume: 139 L

Available in Technora, TAC, Candy, Camo, Blue Touch



Thruster fin system
21 cm /8.3" Center fin
11.5cm /4.5" Side fin



Maui & Molokai, Hawaii

I love living on Hawaii, it's where I grew up. It's beautiful, peaceful, and fun here. Maui is the perfect place to do SUP. Whether you like to cruise in flat water, ride the open ocean swells, or just surf. Maui has every condition for every type of rider. When you are in the water here, everything is so clear and beautiful, life actually begins to make sense.

Honora Kalama



Bjorn Dunkerbeck

Standing on top of a board with a rig, Bjorn Dunkerbeck has been winning 36 World titles in a career spanning over 30 years. 12 consecutive PWA overall titles, while winning in the waves in all locations from Japan to Hawaii to Europe, Bjorn even found time to participate in races on all continents and win most of them. Bjorn is quite probably the most successful athlete ever to have stepped onto planet earth and he is still after 30 years in the water only going for gold.

9'0" x 33" Hero

The Hero opens waveriding to everybody. It redefines what is possible for heavier SUP riders to experience in the waves. Unparalleled stability in a board of this length, with turnability defying its 33 inches of width. A board so easy to surf that you will become an instant super hero.

Flat profile nose and middle section with tail V.

- Dimensions:**
Length: 274cm
Width: 84cm
Tail Width: 18.8" /48cm
Thickness: 4.13" /10.5cm
Volume: 146 L

Available in Technora, TAC, Candy, Camo, Blue touch



Thruster fin system
17 cm /6.7" Center fin
12 cm /4.7" Side Fin



Tahiti

Tahiti is mind blowing, the place is so beautiful. The swell was from the west which I found was not the ideal direction, my first surf at Teahupoo ended up actually going right. Amongst the closeouts there were still some sick ones to be had!

Dave Muir



9'0" x 30" Converse

Maneuverability and stability in a short length. The 9'0 converse is a well balanced short board that's easy to use. From it's unique combination of outline curve and rocker, it produces the performance attributes of being fast, loose and responsive. Especially suited for riders coming down to a shorter length board or rapid progression.

Mono concave nose merges to slight V.

Dimensions:
Length: 274cm
Width: 77cm
Tail Width: 19.2" /46.2cm
Thickness: 4.0" /10.2cm
Volume: 136 L

Available in Technora, TAC, Candy, Camo, Blue Touch



Thruster fin system
20 cm /7.9" Center fin
11.5cm /4.5" Side fin

9'1" x 29" PRO

From a 6'4" shortboard into SUP proportions, that is a snapshot of this board's outline evolution. It provides an outline/rocker combination to maximize speed while still being extremely loose. It gives you high performance when it's small, still being able to hold a rail in larger waves. The 9'1 Pro has ability to go vertical and still turn the tightest of arc's in your cutbacks. An amazing new sensation, but be aware that its less stable than the progressive Converse.

Mono concave nose section to flat middle with tail V.

Dimensions:
Length: 276cm
Width: 74cm
Tail Width: 18.1" /46cm
Thickness: 4.2" /10.9cm
Volume: 130 L

Available in Technora, TAC, Candy, Camo, Blue Touch



Thruster fin system
19 cm /7.5" Center fin
11.5cm /4.5" Side Fin



Dan Gavere

My paddling career started before I could even spell the word I guess. My father started taking me down rivers in an open canoe before I turned 10 years old, after a few years and a couple hundred miles of paddling down the classic rivers of the rockies. I decided I wanted to be in control of my own craft and the first time I saw a kayak go by I told my dad "I want one of those". My dad soon presented me with my first kayak and little did either of us know I would eventually dedicate my life to paddling. Now almost 30 years later I am still as excited about paddling as I was that first day I got to paddle my new kayak. With over 200 professional kayaking events under my belt and thousands of river miles logged on 5 continents kayaking, I still look forward to following the path of my paddle everyday, except now I do it standing up. Over the years I have always been drawn to new sports like kiteboarding, snowboarding,

freeriding on my mountain bike. The satisfaction I got from SUP'ing hit me like a freight train and it wasn't long before I started wondering if I could take it down the river? Providing one of the most challenging and rewarding aspects of paddling I have ever tried, paddling whitewater for some reason connected me back again with my river roots. The feeling you get when going down a rapid and the commitment it takes is overwhelming and addicting. I look forward to seeing where we can take this unique aspect of the sport and I am determined to help create a board that can make it safer, easier, and more fun than anything currently available. The future is bright for SUP whitewater and I look forward to the challenges and rewards that will come with it.

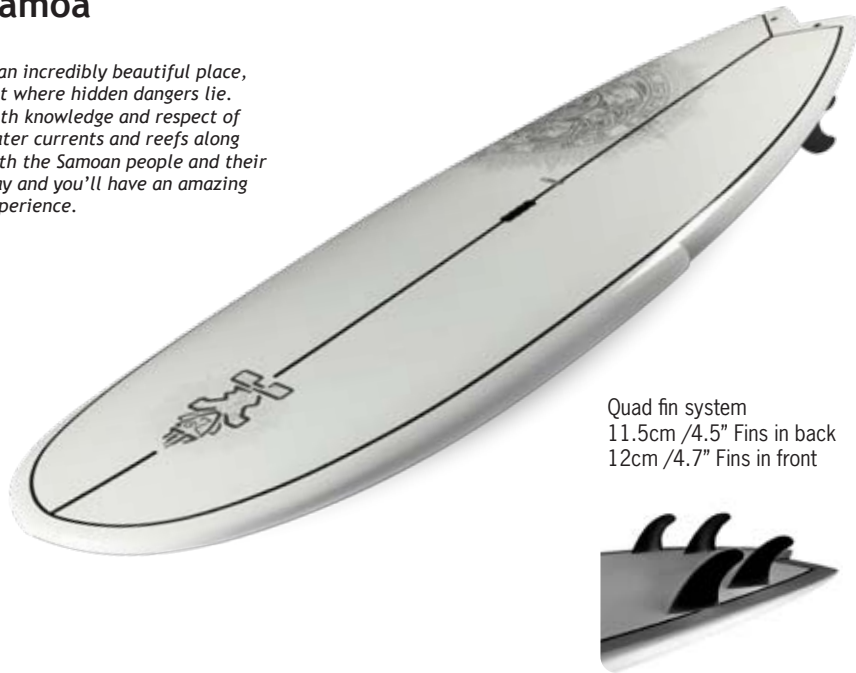
Dan Gavere





Samoa

Is an incredibly beautiful place, but where hidden dangers lie. With knowledge and respect of water currents and reefs along with the Samoan people and their way and you'll have an amazing experience.



Quad fin system
11.5cm /4.5" Fins in back
12cm /4.7" Fins in front

8'5" x 30" Pocket Rocket

The Short, stable and fast shape that changed the perception of SUP shortboarding is still the benchmark in onshore and more mushy conditions. Seamlessly smooth acceleration and lightning top end speed allow you to make the fastest of sections, with the shorter length allowing it to fit into smaller pockets. Stability is enhanced with the wide nose and pulled in tail, utilizing the "Stinger" concept to provide the unique combination of a high performance board, while still being user friendly.

Mono concave nose section runs to double concave back section with fish tail.

Dimensions:
Length: 256cm
Width: 77cm
Tail Width: 19" /48cm
Thickness: 4.2" /10.6cm
Volume: 126 L

Available in Technora, TAC, Candy, Camo, Blue Touch



Thruster fin system
19 cm /7.5" Center fin
11.5cm / 4.5" Side fin

8'5" x 29.5" Pro

The extreme end of SUP shortboard performance has been further redefined with the 8'5 pro. Dedicated to the advanced SUP rider looking for maximum speed, drive and sensitivity through turns, providing the ability to go vertical or for full roundhouse cutbacks. From small beach breaks to race track barrels, an ideal traveler partner to take anywhere for any type wave. Scott McKercher top choice.

Mono concave nose section to flat middle with a fair amount of tail V.

Dimensions:
Length: 256cm
Width: 75cm
Tail Width: 17" /45.5cm
Thickness: 4.1" /10.6cm
Volume: 127 L

Available in Technora, TAC, Candy, Camo, Blue Touch



Venice, Italy

"What an amazing experience, several emotions blended together when we went to Venice. Gliding through the water in places where the consuetude would never arrive. We stood up paddling in places where history of the ancient city is signed in the channel, where people live with their hopes and dreams. An amazing tour around the city, watching temples, which surrounds our souls and listen to ancient music, floating out through one of the many windows above our heads. We discovered a new world just looking at it from a different perspective, to be open to the innovation and to the creativity that inspires people while making their watercrafts. Leading the innovation in a harmonic flow with the past, paddling into the future, this is SUP..."

Dario Olivero



Thruster fin system
19 cm /7.5cm, Center fin
11.5cm /4.5" Side fin



8'0" x 26" Tiki

Every good light weight rider on the team have totally fallen in love with this shape. Dedicated ripper for smaller framed people to tear it up. Fast and loose is the feedback received. With mono concave to a V'd double concave, allowing acceleration of the learning curve beyond the parameter's of today.

Mono concave nose section to flat middle with a fair amount of tail V.

Dimensions:

Length: 243cm
Width: 67.5cm
Tail Width: 17.7" /43.3cm
Thickness: 4" / 10.2cm
Volume: 105 L

Available in Candy, Camo, Blue touch

Chicama Peru

Stand Up Paddle boarding is far from new.

In Peru, villages were often built close to heavy shore breaks as protection from ocean pirates. The fishermen adapted and developed reed crafts, called Caballito de Totoro, to be able to bring fish in through the waves. Peruvian archeologist has discovered that the art of Stand up paddle boarding must have existed for thousands of years with the discovery of stand up paddle craft dating back over 5000 years on crafts such as these. In 1947, Thor Heyerdahl, a Norwegian explorer, adventurer and scientist set out to prove that ocean currents in the Pacific Ocean was the genetic link between the Polynesians and South Americans, (thus also the arts of fishing and surfing

between the countries). He traveled to Peru where they used trees and other native materials to construct a balsawood raft in an indigenous style (as recorded in illustrations by Spanish conquistadores). They set off on the "Kon Tiki" and 101 days later smashed into a reef on the Tuamotu islands. The general consensus is that SUPs heritage comes from Polynesia, where it was utilized purely as a pleasurable past time, rather than using the craft as a fishing tool. This could provide a possible link between stand up paddle boarding, Peru, Tahiti and its heritage.



7'11" x 29" Seven Eleven

WARNING, this short shape is quickly taking you to levels that seemed impossible. Advanced SUP riders and light weights are suited to get the most out of this board. Radically responsive, only the 7'11" x 29.5" POD will match it's rail to rail ability, vertical projection, speed down the line and ability to fit into a pocket. It doesn't have the greatest glide into waves and will test your balance. However, the performance benefits of it's smaller size usually outweigh these factors for those looking for "a short board" feel.

Mono concave nose section to flat middle with a fair amount of tail V.

Dimensions:
 Length: 242cm
 Width: 74.8cm
 Tail Width: 18" /45.7cm
 Thickness: 4.1" /10.5cm
 Volume: 116 L

Available in, Technora, TAC, Candy, Camo, Blue touch



Thruster fin system
 19 cm /7.5" Center fin
 11.5cm /4.5" Side fin





Indonesia

An island sitting in the Indian Ocean 8 degrees south of the equator, resting on the western fringes of the ring of fire, with perfect waves & reef passes positioned with care to ensure ease of access & time enough to enjoy the view as you enter the lineup.

A perfect place to extend the imagination & allow your mind to free surf waves not yet ridden as you enter warm waters for the beginning of yet another pre dawn session.

These are the testing grounds for a new range of STARBOARD SUP models, pushing the idea, driving evolution, and following the quest for innovation.

Enjoy the result of many early morning sessions & late afternoon sunset surfs on the Island of the Gods which I call home, Bali Indonesia, as close to SUP PARADISE as is possible here on EARTH.

Cheers
Pete

7'4" x 29.5" POD Performance Over Drive

Demands for PERFORMANCE, wishes to be floating OVER sections, needing to be able to DRIVE hard off the bottom, a melting pot of bullet points. A thought to attempt what was considered impossible, a realization that it was plausible, a result providing endless supping fun. Welcome the POD (performance overdrive), at 7'4" x 29.5" this is an ultimate high performance SUP that places you in to the pocket & lets you surf out. A board designed to push your ability and has you frothing for more action in performance waves, showing you that supping has no curtain call, it is continuously emerging with new ambitions & this board places you in the front line of evolution..

Mono concave nose section to flat middle with a fair amount of tail V.

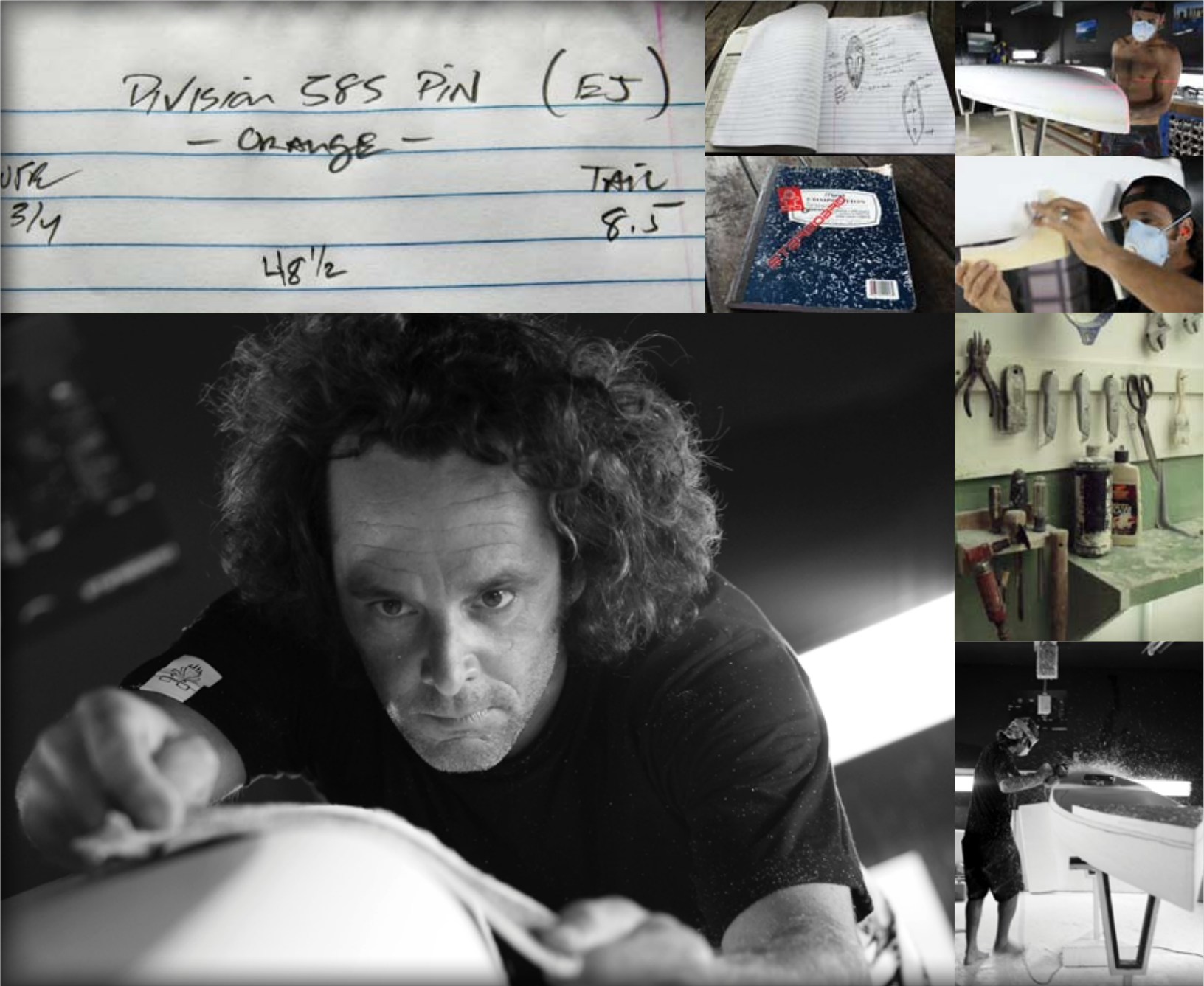
Available in Candy, Camo, Blue touch

Dimensions:
Length in cm 225.6cm
Width in cm 75cm
Tail Width: 18" / 45.7cm
Thickness 4.2" / 10.7cm
Volume: 111 liters



Quad fin system
11.5cm / 4.5" Fins in back
12cm / 4.7" Fins in front





Division 585

585 Westlake street Encinitas, California, the address to Ding King Surfboard Repair, which has been a fixture in North County since 1976. Just a mile from the 'A' frame peaks of D street, it sits on what has always been the surfboard hill, back in the original building next to Bahne Skateboards.

Brian Szymanski, one of the most respected paddleboard shapers moved his tools out of his mother's backyard and in to 'The Hill' when he was only 18 years old. He has since then worked with the leaders in the industry for more than 20 years. This has led him to refine production techniques that result in quality above the norm. A high performance short board and big wave surfer turned paddleboard shaper and racer, Brian enjoys the challenges of designing paddleboards for all conditions. With two "Catalina Classic" stock division victories and multiple first place finishes racing his own designs, Brian's shapes are proven winners. In the past four years Brian has made an impact on the paddleboard industry by pushing the expectations of the stock class paddleboards in speed, stability, comfort and quality of construction.

The first SUP board was shaped for EJ (Ernst Johnson) who patiently asked Brian for help. SUP caught Brian attention and he developed a passion of his own for this new sport. EJ, Brandi Baksic and Matt Freidman are the key players in the Starboard/Szymanski R&D team. "We are a group of paddlers who's soul goal is to make test and race fast boards, to think outside the norm and push the boundaries of what is acceptable. We race/ we train/ we adventure paddle. We look for new challenges and design boards to conquer them"

The NEW by Brian Szymanski

The NEW is most possibly the quickest 12'6" SUP hull ever made. To be able to maintain reasonable stability the narrow hull has been dug out completely in the standing area so the feet are just at the water line, thus the stability and balance factor has been drastically increased. The aft section of the cockpit area has been dug out moderately to accommodate for the back foot to easily move backwards for snappy pivot turning, securing that the distance you have gained on the race course is maintained through the critical moments of turning the buoys. There are 2 drainage holes in each foot well to ensure rapid release of possible water gathering.

Brushed Carbon

Starboard's brushed carbon technology brings together the lowest weight tolerances with the highest precision. The lightweight EPS core is wrapped with 160 gram Epoxy impregnated Carbon and covered with a 60 gram layer of glass for sanding protection. The light paint job is brushed further to increase precision and reduce weight. The white toned finish coat protects the board from over heating. High density PVC foam reinforcements are used around inserts. The standing area is a matrix of 500kg/3 0.6 mm pine wood, 200 grams glass and an additional layer of 160 grams Carbon.

Available in Red Stripe brushed carbon and Blue Stripe full epoxy, EPS, glass construction.

12'6" x 25"
Length: 380cm
Width: 63.5cm
Tail width: 8.9" /22.6cm
Thickness: 9.8" /25cm

12'6" x 23.5"
Length: 380cm
Width: 59.7cm
Tail width: 7.8" /20cm
Thickness: 10.23" /26cm





Rainbow Sandals Battle of the Paddle

October 3-4 2009

Race courses through open ocean including a ten mile distance contest—round trip from Dana Point to San Clemente and back—a multi-lap circuit through the breakers, around buoys, back to the beach. With divisions for all ages and abilities and a prize purse of over \$25,000, this year’s contest drew a huge field of competitors to Doheny State Beach from the East Coast and as far away as Australia, Hawaii and Puerto Rico. The international lineup in no way prevented local athletes from making a great showing and coming away with some of the best results of the weekend.

In the Distance SUP Brandi Baksic finished in the number one spot among the women with a time of 01:55:12. The Open Age Group race drew a huge field of 297 making for some difficult moments maneuvering through the surf with so many paddlers vying for the win.

The venue, complete with music, food, entertainment and a SUP Expo along with beautiful weather made for a perfect backdrop for the second installment of the Battle of the Paddle. The large crowd of spectators—and huge field of competitors—drawn by the event were testament to the growing popularity of the sport of SUP and—thanks to Rainbow Sandals—the proceeds raised will go on to benefit the Doheny State Beach Interpretive Association.

- Results:**
1st place -Open Age Group Race overall female Nikki Gregg
1st place -Open Age Group Race overall stock Zane Schweitzer
1st place -Open Age Group Race M 40-49 stock Brian Szysmanski (2nd overall)
3rd place -Elite Race overall female Brandi Baksic
1st place -Distance Race SUP overall female Brandi Baksic
1st place -Distance Race SUP overall stock male EJ Johnson
1st place -Distance Race SUP 14ft Mens under 18 Zane Schweitzer
2nd place -Distance Race SUP-14ft Mens Under 18 Connor Baxter
1st place -Distance Race SUP-Mens Stock 30-39 John Hibbard
3rd place -Distance Race SUP-Men's Stock 40-49 Brian Szysmanski

Surf Race 12'6" x 26.5"

The Surf Race is designed for going in and out through the surf, with a flatter deck for easy foot movement and pivot turns.

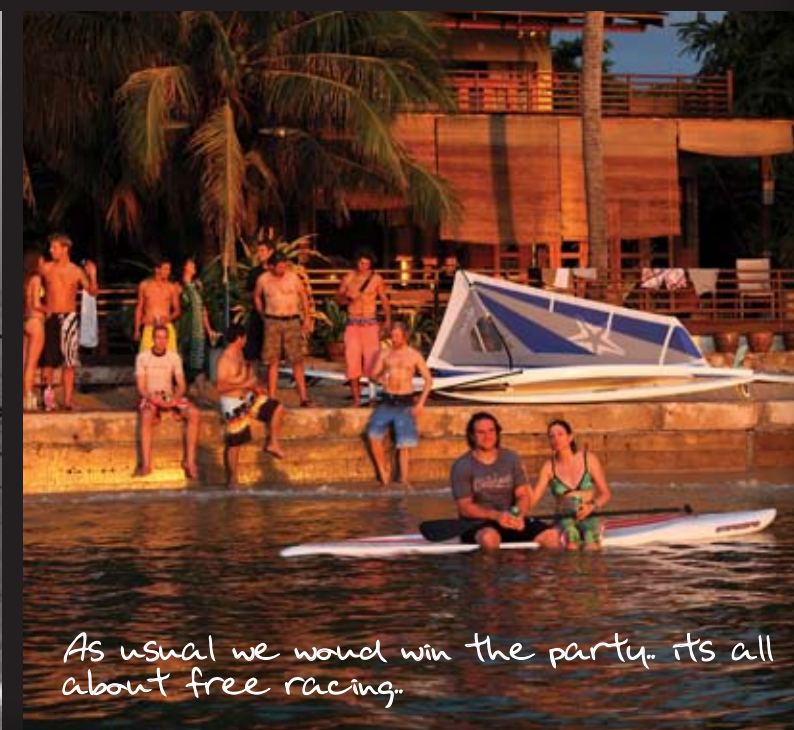
It has an optimum foot spread for stability and comfort and sports the NEW's racing rocker for speed and glide, working well in a large variety of conditions. The shallow single concave bottom increases speed when surfing bumps and swells.

This board was used by Nikki Gregg to win the Women's Open race at the 09 Battle of the Paddle. Compared to the NEW, the Surf Race is a more versatile and stable shape.

Available in Red stripe brushed carbon and Blue stripe full Epoxy, EPS, Glass

- Dimensions:**
Length: 380cm
Width: 67.3cm
Tail width: 13.8" /35cm
Thickness:17.75" /45cm





'Long Beach Naklua, Thailand

Long Beach in Naklua, located on west side of the bay of Siam, just north of Pattaya. This is where we practice Yoga in the morning while watching the sunrise from the roof of our flat water development center. Testing new shapes and working on modifications and refinements all day while evenings are spent at the veranda reflecting over the good moments in life.

Free Race

An exciting way to comfortably enjoy efficient paddle boarding. The Free race design nicely share the water and are great for both flat water and choppy conditions. They are also well suited for surf style events like the Battle of The Paddle. The semi sunk deck provides more balance and the flat mid rocker translates each stroke into forward motion. The board for those looking for performance and ease at the same time.

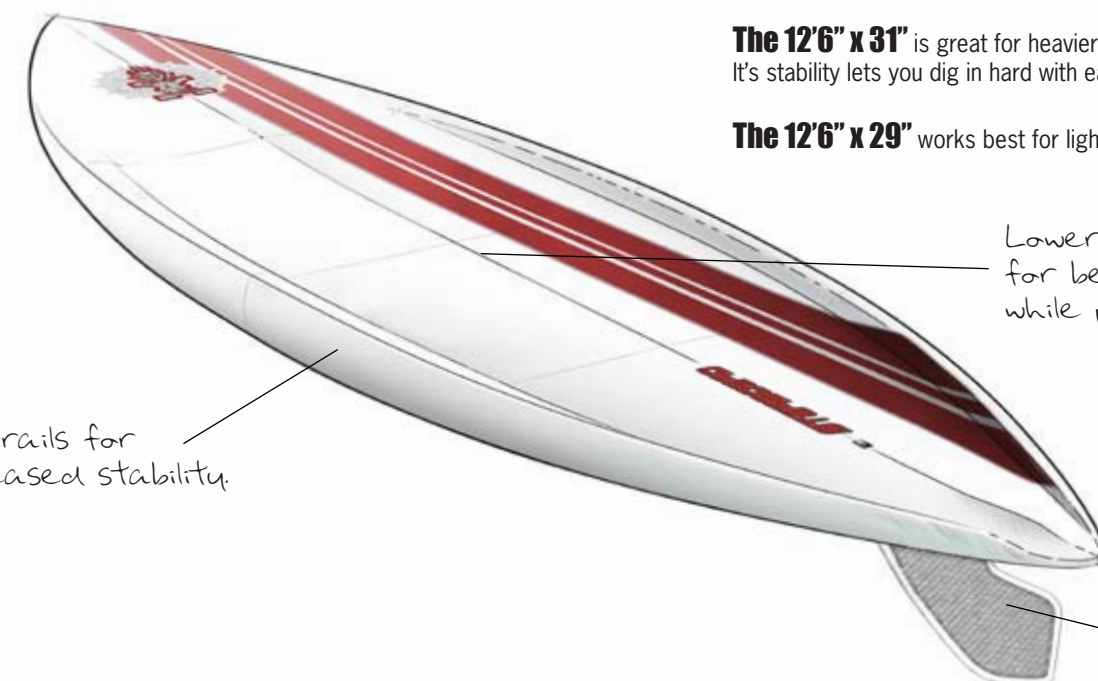
Available in Red stripe brushed carbon and Blue stripe full Epoxy, EPS, Glass.

12'6" x 29"

Lenght: 380cm
Width: 74cm
Tail Width: 34.5cm /13"
Thickness: 19.6cm /7.7"

12'6" x 31"

Lenght: 380cm
Width: 79cm
Tail Width: 45cm /17.5"
Thickness: 18cm /7"



The 12'6" x 31" is great for heavier riders and rougher conditions. It's stability lets you dig in hard with each paddle stroke.

The 12'6" x 29" works best for lighter riders and flatter water.

Lowered standing area for better balance while paddling.

High rails for increased stability.

hexel fin with extra swept angle for sea weed protection



11 City Tour, Holland

The 11-City tour started 100 years ago by ice skaters. The legendary 220 km race has since then been preformed in a variety of disciplines including cycling, rowing, motor biking, walking and swimming. In this milestone year 2009, Stand Up Paddle was added to the list of disciplines. It makes me happy since I am passionate for both ice-skating and SUP. Both sports offer great competitive elements as well as experiencing nature and the feeling of being 'above the water'. Besides that, I was introduced to SUP in Hawaii, which has now been emerged into the Dutch culture, to me it symbolizes the passion evolving around a growing sport.

Anne Marie Reichman



K-15 15'0" x 30"

The K15 is a complete breakthrough and comes directly from one of the greatest designers of our time. Jim Drake has created a board that is extremely efficient, friendly and fast. The slightly rounded sleek underwater hull with a sharp nose provides a fantastic paddling sensation on flat water. The shape also travels extremely fast and smooth in choppy water on all courses. It catches surf easily and you can walk back in the cockpit to lift the nose up to fit any sort of wave configurations. The water ventilation plugs are designed in a way where you can open and close them by the touch of your finger tips. Keep them closed for flat water paddling and open them for rough water adventures. There are insert plugs both in the front and in the back of the board to tie down bags or even a storage box if needed.

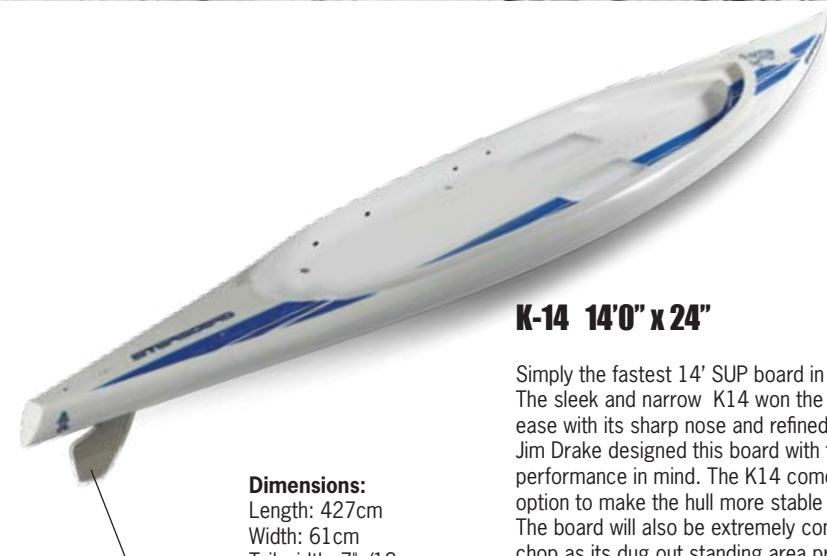
The K-15 is also a fantastic light wind windsurfing board, resembling the Serenity from Starboard's Windsurfing range. It doesn't require a jumbo sail. It doesn't require pro-level skills to enjoy. Best of all, it doesn't require real wind for an exhilarating ride. Simply attached your rig and center fin, hop on, sheet in and go.

Available in Red Stripe Full PVC Sandwich and Blue Stripe full Epoxy, Glass, EPS with wood veneer standing area.



Dimensions:

Length: 457cm
Width: 77cm
Tail width: 8.8" /22.4cm
Volum: 228L
Thickness: 7.3" /18.6cm



19cm
hexel fin

Dimensions:

Length: 427cm
Width: 61cm
Tail width: 7" /18cm
Thickness: 7.28" /18.5cm

K-14 14'0" x 24"

Simply the fastest 14' SUP board in the world. The sleek and narrow K14 won the SUP world cup with ease with its sharp nose and refined hull. Jim Drake designed this board with the ultimate performance in mind. The K14 comes with a middle fin option to make the hull more stable if needed. The board will also be extremely competitive in smaller chop as its dug out standing area provides extra stability. The K14 offers efficiency at its best and a speed sensation which has not been available to Stand Up Paddle boarders before now.

Available in Red Stripe brushed carbon and Blue Stripe Epoxy Glass

Jever World Cup, Hamburg

Hamburg, 12th of July 2009 27.000 spectators, 143 participants, six proud winner, a lot of new infected Stand Up Paddler, an easygoing surf atmosphere amidst the Hamburg HafenCity, high spirited after show party's, action on the water of the Elbe and a lot of fun - short, the 1. JEVER SUP World Cup Hamburg 2009 was a thorough success.

Ekolu Kalama winner in Long distance and Sprint distance:
Hamburg is a beautiful city with friendly people. 27,000 fans were in attendance and although most of them have never witnessed stand-up paddling before, they were eager to touch our boards and paddles and learn as much as possible. There were lots of takers willing to try it out for the first time. All in all, it was the best stand-up paddle event that I've been to. I think Europe will be the new racing mecca for stand-up. The Germans know how to do it! Race



Oh Boy
yet another
man in distress!



At least I can
stand up and spot
him quite easily.



OK, lets knee paddle the last bit,
good that the board is only 28" wide.



Yes, hold onto the handles and you
will be safe.



Incredible, the extra nose volume and nose
rick makes the way back to the beach a
breeze, gotta get back out and take the
board for a stand up paddle surf session.



Dimensions:
Length: 370cm
Width: 71cm

12'0" x 28" Ocean Rescue

Stand Up paddle boarding offers a new dimension to the world of Ocean Rescue services. Our new 12'2" x 28" has been especially developed for life rescue.

The extra nose volume and higher nose rocker cuts down on drag while paddle transporting a person through surf.

At 28" width the hull is narrow enough for prone paddling and knee paddling. The high volume rails provide ample stability for Stand up paddling and patrolling. The hulls length offers great glide for cruising and the well balanced boardsurfs real well for its size. It is responsive to paddle and easy to turn.

Multiple handles have been attached for the distressed person to hold onto. The handles can also be used for the Life Guards to carry the rescued person on top of the board from the water to the car.

Starboard offers the service of custom decorating the front section of the board with the name of the surf rescue club or association.



The Arctic Challenge, TAC

By Terje Haakonsen



TAC

Inspired by the vast Norwegian landscape, traditional Viking swords and helmets, Starboard proudly presents the Terje Haakonsen collectors series. The beautifully hand crafted boards are built to high precision at light weight in the strong precision wood technology that Starboard pioneered back in 1994. Most of the board range is available in this refined offering. If you get your hands on one, you might see yourself peacefully gliding across the Norwegian Fjords or challenge the uniquely powerful waves at Lofoten island during a midnight sun session.

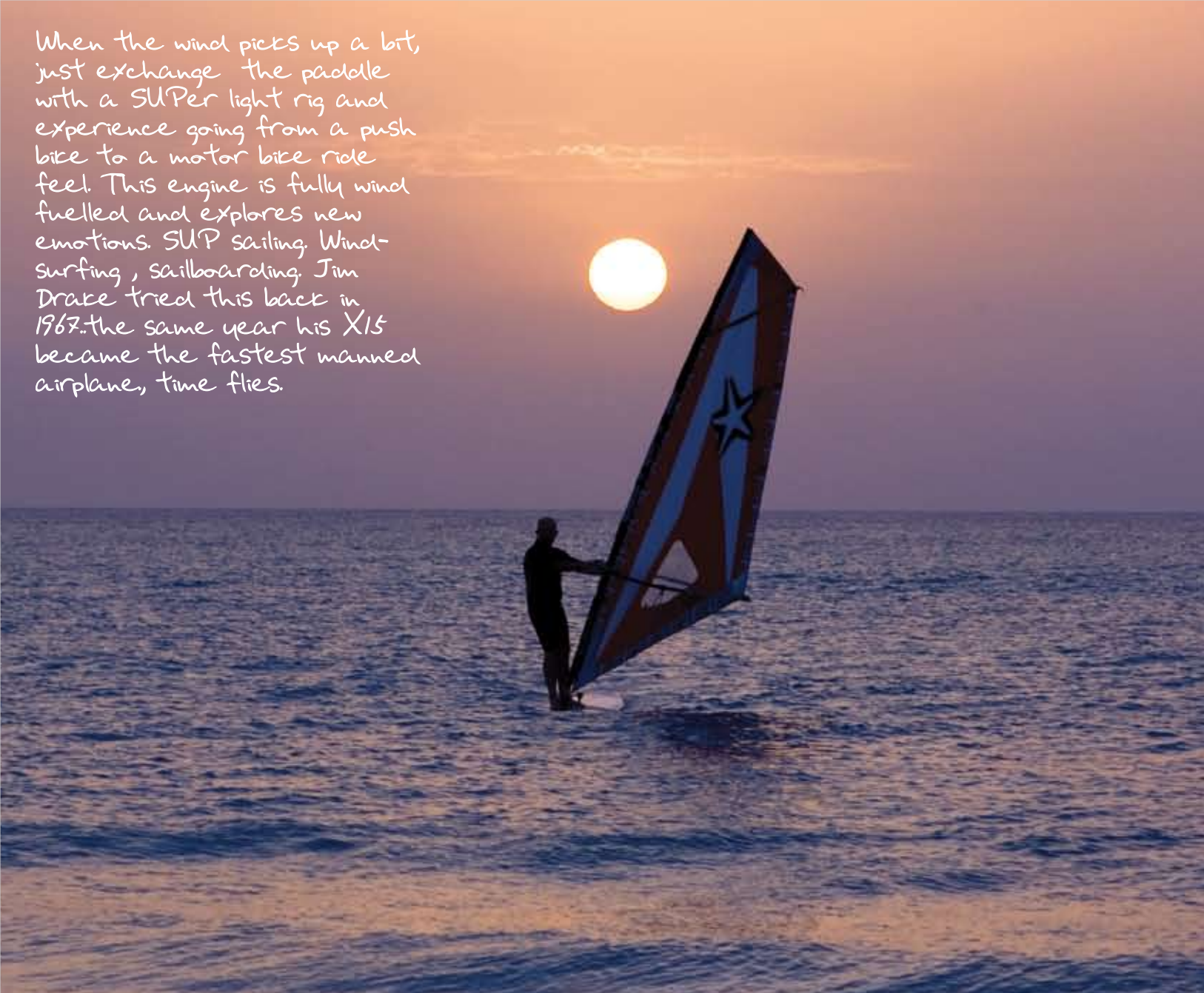
"My new paddle boards are another beautiful additions to my board quiver. For surfing days or just cruising the fjords where I live, its an easy way to get psyched and out there!"

Terje Haakonsen

Terje, the all time snowboarding legend spending his time in the water between Norway, Hawaii and Bali.



When the wind picks up a bit, just exchange the paddle with a SUPer light rig and experience going from a push bike to a motor bike ride feel. This engine is fully wind fuelled and explores new emotions. SUP sailing. Wind-surfing, sailboarding. Jim Drake tried this back in 1967..the same year his X15 became the fastest manned airplane, time flies.



Nice little boat to transport our boards to Rottneest island.

Nice crew for my little SUP harem team.

The New SUPer 12'0" and the SUPer 12'6"

The World's first SUP/windsurf boards with a fully retractable daggerboard system, unlocking the doors to a wonderful world of wind and water.

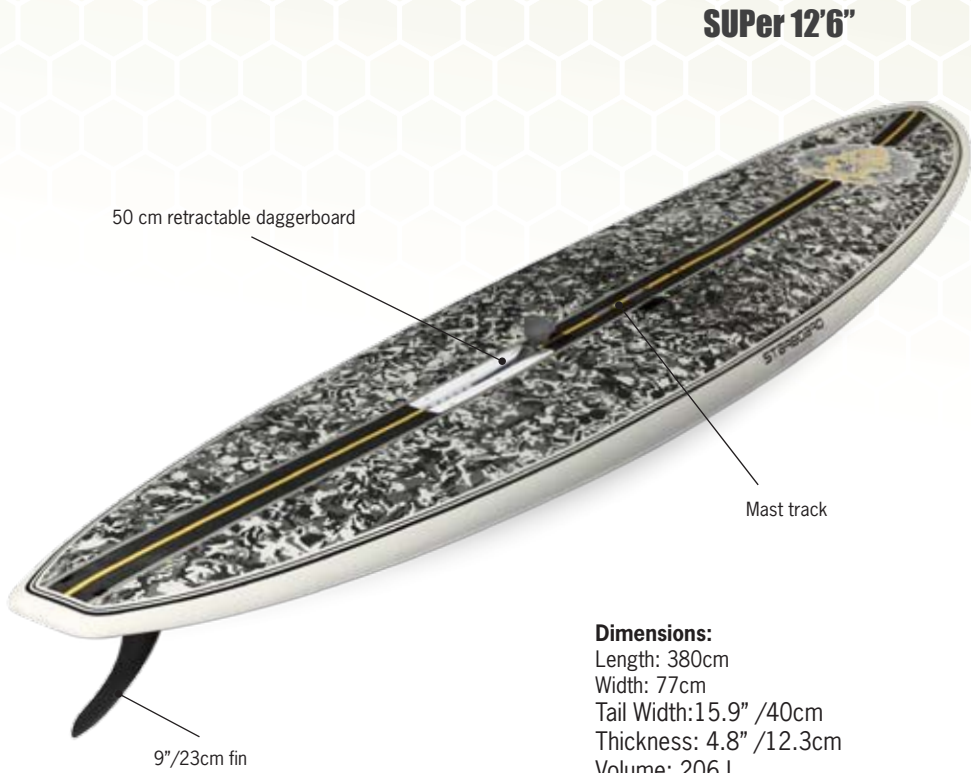
When stand up paddling, their long, slender shape glides smoothly and catches waves easily with surprising maneuverability. The integrated daggerboard and mast track for windsurfing transforms the board into a lightwind windsurfer, a maneuverable board for lightwind waveriding and for old-school flat-water freestyling.

A true crossover between two sports, inviting all generations.

SUPer 12'0"x 32"
Shorter and wider, for more stability and an easier ride when windsurfing or paddling.

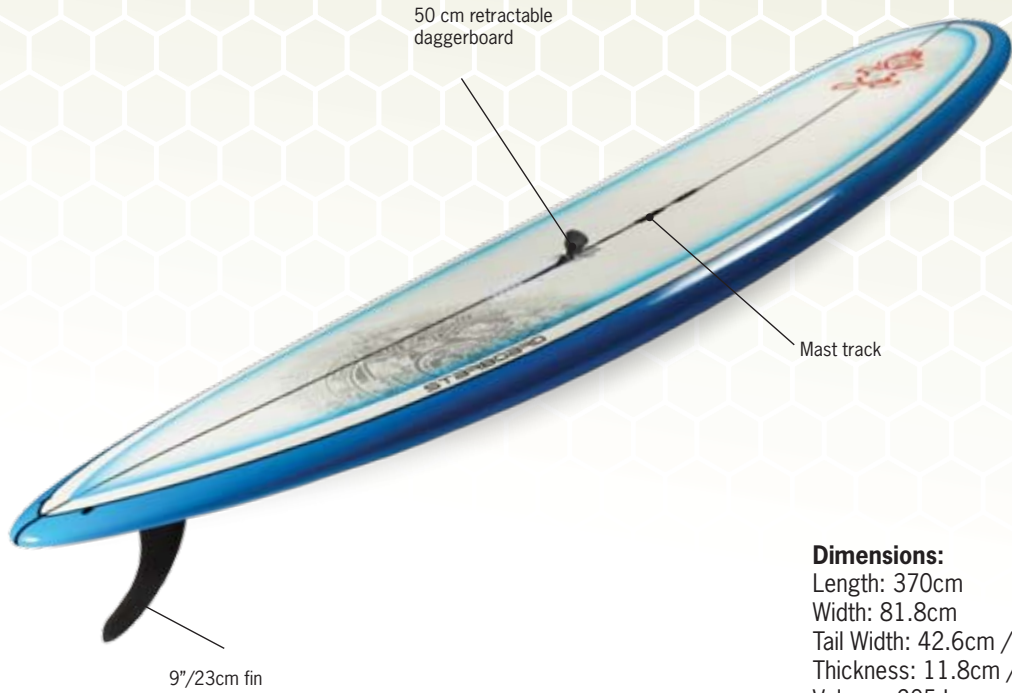
SUPer 12'6"x 30"
The longer and narrower model, for more glide and a faster ride, whether windsurfing or paddling.

Perfect for clubs.



Dimensions:
Length: 380cm
Width: 77cm
Tail Width: 15.9" / 40cm
Thickness: 4.8" / 12.3cm
Volume: 206 L

SUPer 12'0"



Dimensions:
Length: 370cm
Width: 81.8cm
Tail Width: 42.6cm / 16.7"
Thickness: 11.8cm / 4.6"
Volume: 205 L

ABS rail protection along the entire paddle blade.

Enduro Carbon

A well balance blade design with a medium strong dihedral providing stability and power, available in 4 sizes for different power requests. Designed as a multipurpose paddle for waves, flat water and racing.

Each Carbon blade is hand laminated around PVC foam to reduce weight. The rails are carefully inlaid with ABS for durability.

The light and responsive Starboard carbon shafts are built not only to perform with great rebound carteristics, but also to last.



Enduro 430
Blade length: 38.5 cm
Blade width: 20.5 cm
Area: 430 cm²
Shaft flex: FMS 50
Length: 216.5cm
For paddlers under 50 kg

Enduro 475
Blade length: 41 cm
Blade width: 20.5 cm
Area: 475 cm²
Shaft flex: FMS 50
Length: 219cm

Enduro 525
Blade length: 43.5 cm
Blade width: 20.5 cm
Area: 525 cm²
Shaft flex: FMS 50
Length: 221.5cm

Enduro: 550
Blade length: 46 cm
Blade width: 20.5 cm
Area: 550 cm²
Shaft flex: FMS 50
Length: 224cm

The Power of the Paddle

The paddle is the connection between your human power and the water.

The angle of which the paddle blade runs though the water with each stroke and the size of the blade largely dictates the power efficiency of each stroke and how much you can trust your blade. With a well balanced paddle blade moving straight through the water, little energy will be lost. The size of the blade can be compared to the gear of a bike, the higher the gear or the smaller the blade, the less effort each stroke takes. The lower the gear or the bigger the blade, the more energy will be used and the more forward motion will be activated. For long paddle session or for lighter people, a smaller blade is recommended.

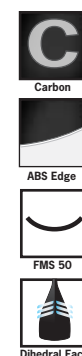
Introducing the Flex Measurement System FMS

The reflex momentum of the paddle shaft is crucial as a paddle with good flex and high rebound characteristics will provide better speed and less muscle ache. Starboard has carefully selected carbon shafts with the optimal stiffness, deflection and extra high rebound numbers to maximize the power potential that each stroke presents, yet ensure the durability required for heavy loads when used in surf. The blades are foiled to move real straight through the water and are available in 6 sizes measured in CM2 to meet your specific power request.

Power Carbon

For strong paddlers wanting maximum paddle power in each stroke. The Power paddle provides extreme acceleration and is well suited for a quick take off in wave sections needing that extra forward motion. Short flat water sprints is another strenghts of this very well balanced blade which delivers an clean and sharp paddle sensation.

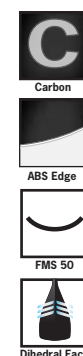
Blade length: 47.5 cm
Blade width: 23.7 cm
Area: 670 cm²
Shaft flex: FMS 50
Length: 225cm



Wave Carbon

The popular large blade for fast acceleration in waves. The forgiving rounded blade also provides a lot of surface to lean on during maneuvers on the wave face. The Wave blade sports a slightly rounded profile to enhance stability in each stroke.

Blade length: 46.5 cm
Blade width: 23 cm
Area: 600 cm²
Shaft flex: FMS 50
Length: 225cm



Enduro Fiberglass

Built relatively light but strong, the oval shaft profile is stiffening up the composite glass epoxy matrix making it a performance shaft, just missing the fast rebound of a carbon shaft. The fiberglass blade with PVC core is based on the Enduro 525cm² shape and has a full rubber border to minimizes the blade's impact on the rail of the board. The orange blade and handle combo is easy to spot in the water.

Blade length: 44.5 cm
Blade width: 20.5 cm
Area: 525 cm²
Shaft flex: FMS 40
Length: 225cm



Enduro Fiber/Tufskin

The all new Fiber/Tufskin paddle comes with a new nicely foiled strong ABS blade based on the Enduro 525cm². Built relatively light but strong, the shaft's forgiving nature in combination with the cutting edge paddle shape, is positioned as an exceptional good value paddle.

Blade length: 44.5 cm
Blade width: 20.5 cm
Area: 525 cm²
Shaft flex: FMS TBA
Length: 225cm



Adjustable Paddle Option.

Starboard additionally offers the whole Enduro range with an adjustable carbon handle/shaft solution. The shortest setting at 5'/153 cm to longest setting at 6'/183 cm. 7 different positions with 1.5"/3.8cm between each position. Share the paddle with a friend and tune it into wave or flat water mode.

Handles

As an upgrade the premium lightweight Carbon handles are available upon request. Starboard delivers high traction injection molded handles as standard.



WATER SHIRT SS



QUICKDRY GIRL



WATER SHIRT LS



FACTOR



UNDERGROUND



HAPPY MONDAY



CADDY POLO SHIRT



TOAST



TIKINA



TAHITI T-SHIRT



TEAHUPOO BLACK OR WHITE



WET CAP



BEANIE



FLEX



MARGARET RIVER



VISION



RUBIX



SKYWALKER



PATROL



TITANIUM SKIN



WIFI BROWN & BLACK



SHORT LYCRA



ROLLER WHEELS for K15



IMPACT VEST



BLADE COVER



HEXEL FLEX FINS



PADDLE BAG



BOARD BAG



STRONG LEASH

1. 9mm SUPer strong cord
2. Double stainless swivle
3. Key pocket
4. SUPer comfortable diamond cut ankle cushion



MULTI ADJUSTABLE DECK PAD



ACCESSORIES

CORPORATE HEAD QUARTERS
Starboard World Limited
C/O Level 28 Three Pacific Place,
1 Queen's Road East, Hong Kong

REPRESENTATIVE OFFICE [Thailand]
Ph: 66 2 316 5089
Fax: 66 2 316 5091
e-mail: info@star-board.com

ARGENTINA
Hard Wind
Ph: 54 11 4792 1133
Fax: 54 11 4792 1133
e-mail: info@hardwind.com

ARUBA
Fiberworks N.V.
Ph: 297 5866654
Fax: 297 5861838
e-mail: theboardwalk@setarnet.aw

AUSTRALIA
Auswind
Ph: 618 92444446
Fax: 618 92444448
e-mail: sales@auswind.com.au

AUSTRIA
Sport Schneider
Ph: 43 2177 2855
Fax: 43 2177 2880
e-mail: office@sport-schneider.com

BELGIUM
Fox Sports
Ph: 31 50 3110845
Fax: 31 50 3137393
e-mail: info@fox-sports.nl

BONAIRE
Bonaire Windsurf Place
Ph: 599 7172288
Fax: 599 7175279
e-mail: theplace@telbonet.an

BRAZIL
Katanka Ltd.
Ph: 5561 81725233
Fax: 5561 33676782
e-mail: katanka@katanka.com.br

BALI, INDONESIA
SURF TRaVeL ONLIne
Email: peter@surftravelonline.com
mobile: +62 (0)818 348824
ph: +62 (0)361 750 170
fax: +62 (0)361 750 577

BULGARIA
Eurosite Ltd
Ph: 00359 2870 3084
Fax: 00359 2870 3084
e-mail: stefan@siroko-surf.com

CANADA
Trident Performance Sports Inc.
Ph: 604 929 9626
Fax: 604 929 4955
e-mail: info@tridentsports.com

CENTRAL EUROPE
APM Marketing GmbH
Ph: 49 89 89511170
Fax: 49 89 89511172
e-mail: team@apm-marketing.de

CHINA
JiaZheng Sports Equipment Ltd.,Cor.
Ph: 86 754 88881077
Fax: 86 754 88882770(809)
e-mail: shop@jzsports.net

CHILE
Windsurfing Chile
Ph: 562 211 1959
Fax: 562 211 5735
e-mail: info@windsurfingchile.com

COLOMBIA
Representaciones Tametco
Ph: 572 4485153
Fax: 572 4422718
e-mail: gerente-tam@tametco.com

Croatia
AB ORIGINAL d.o.o
Mob: +385 98 232677
T: +385 1 3630921
F: +385 1 3630923
surfmania [surfmania@surfmania.net]
www.surfmania.net

CURACAO
Windsurfing Curacao
Ph/Fax: 5999 7384555
e-mail: ingmar@windsurfingcuracao.com

CYPRUS
Windsurfing Center
Ph: 357 2535 2695
Fax: 357 2535 5898
e-mail: m.makedonas@cytanet.com.cy

CZECH
Patrik Hrdina
Ph: 420 608949988
Fax: 420 257327125
e-mail: p.hrdina@volny.cz

DENMARK
Nautic Surf & Ski A/S
Ph: 45 97 12 29 65
Fax: 45 97 12 24 12
e-mail: herning@nautic-surfogski.dk
HR@Nautic-surfogski.dk

DENMARK
Starboard Denmark
Ph: 45 3322 8819
Ph: 45 2048 4797
e-mail: peter@star-board.dk

DOMINICAN REPUBLIC
Vela/Spinout/Dare2fly
Ph: 1 809 571 0805
Fax: 1 809 571 0856
e-mail: info@velacabarete.com

EGYPT
Five Squares
Ph: 2 069 3641074/2 012 1705391
Fax: 2 069 3641074
e-mail: info@go-dahab.ru
Bolshakov@go-dahab.ru

ESTONIA
Extreme Sport Ltd.
Ph: +372 606 2202
Fax: +372 606 2201
e-mail: info@extreme.ee

FINLAND
Rautio Sports
Ph: +358 8 460085
Fax: +358 8 462751
e-mail: jarno.rautio@rautio.fi

FRANCE
Hi-Tech sas
Ph: 33 5 46 44 42 23
Fax: 33 5 46 44 84 98
e-mail: info@hitech-sails.com

GERMANY
APM Marketing GmbH
Ph: 49 89 89511170
Fax: 49 89 89511172
e-mail: team@apm-marketing.de

GREECE
Sportop
Ph: 30 210 94 03 288
30 210 94 04 411†
Fax: 30 210 93 55 174
30 210 94 04 411
e-mail: sportop@otenet.gr

HONG KONG
Wind N'Surf Int'l Ltd. - X Game
Ph: 852 2366 3017
Fax: 852 2366 3671
e-mail: info@xgamehk.com

HUNGARY
Hi-Surf Ltd.
Ph: 36 1 214 9054
Fax: 36 1 214 9054
e-mail: hi-surf@hi-surf.com

ISRAEL
Freegull Sea Sports LTD
Office Ph: 972 4 6270831
Store Ph: 972 4 6364605
Fax: 972 4 6372749
e-mail: freegull@wind.co.il

ITALY
Linkdistribution srl
Ph: 39 0362 337568
Fax: 39 0362 620853
e-mail: info@linkdistribution.com

JAPAN
Maneuverline, Inc.
TOKYO OFFICE:
Ph: 81 3 5245 3113
Fax: 81 3 5245 3114
OSAKA OFFICE:
Ph: 81 6 6609 0035
Fax: 81 6 6609 0036
e-mail: osaka@maneuverline.co.jp

KALININGRAD
Starboard Kaliningrad
Ph: 7 4012 918197
Fax: 7 4012 767313
e-mail: surf@pars.koenig.su

KOREA
Marine Sports Co.,LTD.
Ph: 82 51 206 2100
Fax: 82 51 205 6622
e-mail: sirius@kosmodel.com

LATVIA
Baltwest SIA
Ph: 371 737 4854
Fax: 371 737 4853
e-mail: ansis@baltwest.lv
juris.vasioleks@baltwest.lv

LITHUANIA
Bures.lt
Ph: 370 37 763909/370 685 11895
Fax: 370 37 312825
E-mail: info@bures.lt

MALAYSIA
OXBold Sports
Email: Wilson@oxbold.com
ph: 019-6638336
fax: 603-22832505

MALDIVES
Inner Maldives Holidays
Ph: 00960 3326309
Fax: 00960 3330884
e-mail: oceansplash@innermaldives.com

MADAGASCAR
Sakalava nautique E.U.R.L.
Ph: 261 32 04 512 39
Fax: 334 77 44 21 02
e-mail: adrienbel@hotmail.com

MARTINIQUE
Windsurf Shop SAS Martinique
Ph: 596 696 261687
Fax: 596 596 787778
e-mail: r.vila.f7@wanadoo.fr

MEXICO
The Wind Adventure
Ph: (52) 58150888
e-mail: infomex@wind-adventure.com

NETHERLANDS
Fox Sports
Ph: 31 50 3110845
Fax: 31 50 3137393
e-mail: info@fox-sports.nl

NEW CALEDONIA
Planet Reef
Ph: 687 79 79 70
Fax: 687 28 96 28
e-mail: planetreef@canl.nc

NEW ZEALAND
SUPNZ
Email: jeremy@supsnz.com
ph 64 9 5704636
fax 64 9 5273209

PERU
The Wind Adventure
Ph: 9 822 7523
Ph/Fax: 511 4617695
e-mail: info@wind-adventure.com

POLAND
Vento Co.
Ph: 48 71 341 3357
e-mail: biuro@vento.pl

PORTUGAL
Windsurf Point Lda
Ph: 351-282792315
Fax: 351-282792316
e-mail: info@windsurfpont.com

PHILIPPINES
Starboard Philippines Inc
Ph: 632 8931536
Fax: 632 8931536
Mobile Ph: 63 917 8138393
Mobile Fax: 63 917 8766477
e-mail: manfred.s.luig@gmail.com

RUSSIA
Sportland Co
Ph/Fax: 7 495 518 2317
e-mail: info@sportland.ru

SAUDI ARABIA, QATAR, UAE and OMAN
Shamal Sport
e-mail: shamalsport@yahoo.com

SINGAPORE
Bluefinz
Ph: 65 6746 6141
Fax: 65 6748 1929
e-mail: Pjsu@bluefinz.com

SINGAPORE
Mana Mana Singapore Private Ltd.
Ph: 65 6339 88 78
Fax: 65 6339 78 12
e-mail: info@manamana.com

SLOVENIA
Vidax d.o.o.
Ph: 386 2 4295100
Fax: 386 2 4295101
e-mail: vidax@siol.net

SOUTH AFRICA
Joluka (Pty) Ltd.
Ph: 27 11 608 0185
Fax: 27 11 608 0184
e-mail: gunter@joluka.co.za

SPAIN
G.B.T. -3 Distribuciones S.L.
Ph: 34 91 6516636
Fax: 34 91 6512516
e-mail: gbt3@telefonica.net

SWEDEN
Onwater AB
Ph: 46 54 850560
Fax: 46 54 807802
e-mail: info@onwater.se

SWITZERLAND
Ryf's Surf&Fun
Ph: 41 41 2100391
Fax: 41 41 2100891
e-mail: info@surf4fun.ch

TAHITI
TCMS
Ph: 689 774138/689 774605
Fax: 1 440 6995037/689 813209
e-mail: jcd.t10@mail.pf
t888@mail.pf

TAIWAN
Liquid Sports
Mobile Ph: 886 988292402
Fax: 886 69260361
e-mail: alex@liquidsport.com.tw

THAILAND
Amara Windsurfing
Ph: 668 1862 9958
e-mail: am@windsurfing-thailand.com

UKRAINE
PC "Extrem Sport"
Ph: 38 044 251 7111
Fax: 38 044 463 7943
e-mail: petr@eltrade.com.ua

UNITED KINGDOM
Tushingham Sails Ltd
Ph: 44 1803 712140
Fax: 44 1803 712141
e-mail: windsurfing@tushingham.com

WORLDWIDE



Margareta Engstrom

Your "Heart" often seeks a place where it finds satisfaction and inspiration. When it comes down to specific moments in time, you'll most likely realize that it all goes back to where it started. We move in circles that can take on any direction at any time, but will in the end tie you back to your roots, like a boomerang that always finds its way home. (Life is not linear but cyclical, Gabriel Garcia Marquez)

Just as SUP has come out of its metamorphosis, emerging from its cocoon into the sport that it is blowing up into today. People are all of sudden finding that link which is helping them to become active again, in a way that no other sport has been able to.

What I have learned this year is that a place may not be as significant as what you do with it when you're there. At first I thought the specific locations was the answer to finding the 'home sensation' but then I realized as a spectator you would never understand the feeling of being really stoked as if you were a participant.

SUP is a way to travel and to become immersed in the location like no other activity. It seems to blend us with nature, providing an answer for each individual's specific desire. Whether it is fishing on a lake close to your house or riding waves in Hawaii.

This year we have tried to go further, wanting to photograph the most perfect locations. However, somewhere along the road we had to stop and allow ourselves to see the true spirit of the sport. We found pure stoke in the eyes after a session on the water. The joy of go SUPing at your local beach, without being anyone in particular and simply enjoying the ride.

You don't have to live in the most radical places on earth, or by a perfect blue lagoon to feel the energy of this hobby and it's that which is making this unique sport grow in all corners of the world.

The feeling is mutual, shared and appreciated.

Thank you

Chicama beach restort
Karen & Keith Baxter
Shawneen and Matt Schweitzer
Darren and Jemma
Peter Cox
Scott Currie

Photographers

John Carter
Benjamin Thouard
Franck Debaecker
Ralph Bill
Jeremy Pierce
Jamie Scott
Jason Childs
Jesper Peterson
Victor Cuto
Richard Hallman
Dan Gavere
Dan Fisher
Tiesda You
Hoch Zwei
Tom England
Margareta Engstrom

SUPer STRONG TEAM

Gaute Kristiansen	Product Manager
Margareta Engstrom	Marketing & Photography
Erik Berghlin	Growth Management
Svein Rasmussen	Idea Bank
Arnon Saisorn	Production Support

ART TEAM
Arwut Sanpatchaya
Lei Abinan
KOLTd black

CLOTHS & ACCESSORIES
Carol Filen

Designers
Scott Mckercher
Svein Rasmussen
Jim Drake
Brian Szymanski

Shapers
Nimit Pormjan
Brian Szymanski
Pop Singin
Pat Prapat
Svein Rasmussen